



# Warhawks Men's Basketball

University of Louisiana at Monroe



ULM (6-8, 3-3 SBC)

## WARHAWKS

vs.

Georgia St. (13-6, 6-0 SBC)

## PANTHERS



Game 15

Saturday, Jan. 25, 2014 • 4:00 p.m.

Fant-Ewing Coliseum (7,000) • Monroe, La.

Radio: - KLIP LA 105.3 FM, Nick White (PXP)

Twitter: @ULM\_MBB

### ULM Quick Notes

- The Warhawks are 5-0 all-time against Georgia State including a 3-0 mark at home. The last meeting came on Jan. 3, 1981 with the Warhawks winning 76-66 at Fant-Ewing Coliseum where they are 387-166 all-time

- ULM is .500 in conference play after six games for the first time since 2006-07 when it started 5-1 and went on to win the SBC West Division title

- The Warhawks are 4-0 this season when scoring at least 80 points and 4-0 when tied or leading at halftime. ULM is 5-1 when scoring at least 20 points off the bench

- ULM has had 10 or less turnovers in each of its last four contests

- The Warhawks are 6-0 this season when leading by six or more points (at any point during the game). They are also unbeaten when leading by four or more points in the second half

- Junior Tylor Ongwae has reached double-figures in 12 of 14 games this season and has reached that plateau in all six conference games. He has also led the team in scoring in all six league games. Ongwae averages a team-high 15.4 points per contest on the season and 19.3 ppg in conference action

- Senior Amos Olatayo is second on the team in scoring with 13.2 ppg. He also helps out on the glass with 5.0 rpg. Olatayo has 11 double-figure scoring games this season including three 20-plus games and one 30-point performance

- Freshman Nick Coppola has played 40 minutes in each of ULM's last three games. In ULM's last contest against WKU, he grabbed a career-high six rebounds to go along with his five assists

- Senior Jayon James leads the team in both rebounds (6.0 rpg) and assists (4.1 apg) and scores 9.9 ppg. In conference play, James is shooting .610 percent from the field (second in the league)

### ULM MEN'S BASKETBALL SCHEDULE

|                      |                        |                        |
|----------------------|------------------------|------------------------|
| Fri., Nov. 8         | at No. 5 Kansas        | L, 80-63               |
| <b>Mon., Nov. 18</b> | <b>Samford</b>         | <b>W, 86-52</b>        |
| Thu., Nov. 21        | at Northwestern St.    | W, 84-80 (OT)          |
| <b>Mon., Dec. 9</b>  | <b>Thomas</b>          | <b>W, 84-61</b>        |
| Sat., Dec. 14        | at LSU                 | L, 61-54               |
| Wed., Dec. 18        | at Ole Miss            | L, 75-62               |
| <b>Sun., Dec. 22</b> | <b>Louisiana Tech</b>  | <b>L, 83-61</b>        |
| Fri., Dec. 27        | at No. 3 Ohio State    | L, 71-31               |
| <b>Sat., Jan. 4</b>  | <b>UL-Lafayette*</b>   | <b>W, 103-98 (20T)</b> |
| Thurs., Jan. 9       | at UT Arlington*       | L, 83-79 (OT)          |
| <b>Sat., Jan. 11</b> | <b>Texas State*</b>    | <b>L, 61-36</b>        |
| Thu., Jan. 16        | at Troy*               | W, 75-64               |
| Sat., Jan. 18        | at South Alabama*      | W, 64-58               |
| <b>Thu., Jan. 23</b> | <b>WKU*</b>            | <b>L, 69-51</b>        |
| <b>Sat., Jan. 25</b> | <b>Georgia State*</b>  | <b>4:00 p.m.</b>       |
| <b>Thu., Jan. 30</b> | <b>Arkansas State*</b> | <b>7:00 p.m.</b>       |
| Sat., Feb. 1         | at UL-Lafayette*       | 7:15 p.m.              |
| Thu., Feb. 6         | at Texas State*        | 7:00 p.m.              |
| <b>Thu., Feb. 13</b> | <b>UT Arlington*</b>   | <b>7:00 p.m.</b>       |
| <b>Sat., Feb. 15</b> | <b>UALR*</b>           | <b>4:00 p.m.</b>       |
| Thu., Feb. 20        | at Georgia State*      | 6:00 p.m.              |
| Sat., Feb. 22        | at WKU*                | 7:00 p.m.              |
| <b>Thu., Feb. 27</b> | <b>South Alabama*</b>  | <b>7:00 p.m.</b>       |
| <b>Sat., Mar. 1</b>  | <b>Troy*</b>           | <b>4:00 p.m.</b>       |
| Thu., Mar. 6         | at Arkansas State*     | 7:05 p.m.              |
| Sat., Mar. 8         | at UALR*               | 7:00 p.m.              |
| Thurs., Mar. 13      | Sun Belt Championships | TBA                    |

All times Central and subject to change. Bold indicates home contests.; \*-Sun Belt game

**We are ULM.** Please note that there are only two correct versions of our institution's name, the preferred acronym ULM and the full name, the University of Louisiana at Monroe. Any other reference, including Louisiana-Monroe, UL-Monroe, La.-Monroe, LAM, or simply Monroe, are incorrect.

### Media Relations Contacts

|                             |                           |
|-----------------------------|---------------------------|
| Robbie Kleinmuntz (Primary) | Tom Ritter (Secondary)    |
| Assistant Director          | Graduate Assistant        |
| kleinmuntz@ulm.edu          | rittertf@warhawks.ulm.edu |
| O: 318-342-5462             | O: 318-342-5451           |
| C: 847-912-5380             | C: 318-953-0734           |



# Warhawks Men's Basketball

University of Louisiana at Monroe



## Keith Richard

Head Coach

Fourth Year at ULM  
13th Season Overall

Alma Mater: ULM (1982)

### THE RICHARD FILE

#### COACHING HONORS

- 1999 Sun Belt Coach of the Year
- Has been part of the coaching staff for seven NCAA Tournament and three NIT teams

#### COACHING CAREER

| Season  | School   | Position             | Record     |
|---------|----------|----------------------|------------|
| 1984-85 | ULM      | Graduate Assistant   | 17-12      |
| 1985-86 | ULM      | Graduate Assistant   | 20-10/NCAA |
| 1986-87 | Marshall | Assistant Coach      | 25-6/NCAA  |
| 1987-88 | Marshall | Assistant Coach      | 24-8/NIT   |
| 1988-89 | Marshall | Assistant Coach      | 15-15      |
| 1989-90 | ULM      | Assistant Coach      | 22-8/NCAA  |
| 1990-91 | ULM      | Assistant Coach      | 25-8/NCAA  |
| 1991-92 | ULM      | Assistant Coach      | 19-10/NCAA |
| 1992-93 | ULM      | Assistant Coach      | 26-5/NCAA  |
| 1993-94 | ULM      | Assistant Coach      | 19-9       |
| 1994-95 | La. Tech | Assistant Coach      | 14-13      |
| 1995-96 | La. Tech | Associate Head Coach | 11-17      |
| 1996-97 | La. Tech | Associate Head Coach | 15-14      |
| 1997-98 | La. Tech | Associate Head Coach | 12-15      |
| 1998-99 | La. Tech | Head Coach           | 19-9       |
| 1999-00 | La. Tech | Head Coach           | 21-8       |
| 2000-01 | La. Tech | Head Coach           | 17-12      |
| 2001-02 | La. Tech | Head Coach           | 22-10/NIT  |
| 2002-03 | La. Tech | Head Coach           | 12-15      |
| 2003-04 | La. Tech | Head Coach           | 15-15      |
| 2004-05 | La. Tech | Head Coach           | 14-15      |
| 2005-06 | La. Tech | Head Coach           | 20-13/NIT  |
| 2006-07 | La. Tech | Head Coach           | 10-20      |
| 2008-09 | LSU      | Assistant Coach      | 27-8/NCAA  |
| 2009-10 | LSU      | Assistant Coach      | 11-20      |
| 2010-11 | ULM      | Head Coach           | 7-24       |
| 2011-12 | ULM      | Head Coach           | 3-26       |
| 2012-13 | ULM      | Head Coach           | 4-23       |
| 2013-14 | ULM      | Head Coach           | 6-8        |

#### PLAYING CAREER

- Played for ULM from 1978-82; Coached by Lenny Fant, Benny Hollis & Mike Vining
- 1979 Atlantic Sun Tournament Champions, NIT
- 1980 Atlantic Sun Regular Season Champions
- 1982 Atlantic Sun Tournament Champions, NCAA
- Two-time team captain ('81 & '82)
- Led team in assists twice

#### EDUCATION

- Bachelor's degree in general business, ULM (1982)
- Master's degree in guidance counseling, ULM (1986)

### ULM Quick Notes Continued...

- With 12 regular season games still remaining, ULM has already surpassed its win total by two games from last season and has matched its conference win total in conference play. ULM was 4-23 overall and 3-17 in SBC play last year
- Last weekend, the Warhawks won consecutive road games for the first time since the 2002-03 season when they won three in a row. ULM defeated Troy 75-64 and South Alabama 64-58
- The seven-point halftime deficit against South Alabama was the largest ULM has overcome this season in a victory. ULM's seven turnovers against the Jaguars were its fewest in a game this season. ULM outscored USA 24-13 off the bench
- Against Troy, the Warhawks shot over 80 percent from the free throw line for the first time this season (14-for-17, .824). ULM also outscored Troy 21-5 off the bench
- The Warhawks opened league play with back-to-back overtime games for the first time in school history. ULM is 2-1 in overtime this season, and ULM head coach Keith Richard is 17-8 in his career
- Against UL-Lafayette, Ongwae and James each notched a double-double. ULM had two student-athletes record a double-double in one game for the first time since Dec. 22, 2009 when Rudy Turner and Tony Hooper did it against Harding
- ULM's 11 blocks against ULL were the most by ULM since Dec. 2, 2006 when it had 10 against William Carey
- The Warhawks played the eighth toughest non-conference schedule in the country, according to cbssports.com. ULM's opponents went a combined 71-30 in non-conference play as the Warhawks took on a pair of top-5 opponents
- ULM went 36 days inbetween its first two losses on the season. It was its longest stretch without a loss since 1993-94 when they went from Jan. 18 - Feb. 28 between defeats
- After defeating Thomas (Ga.) on Dec. 9, the Warhawks won three consecutive games for the first time since 2007-08. They got off to a 3-1 start on the season for the first time since 2004-05
- The Warhawks trailed Northwestern State by 18 in the second half before mounting their biggest comeback of the season on Nov. 21
- In ULM's home opener, it thumped Samford 86-52 on Nov. 18 and was up by 41 at one point in the second half. The 34-point win was the largest margin of victory for ULM since a 97-43 win over Union College (Ky.) on Jan. 3, 2009. It was ULM's most lop-sided score over a Division I program since Feb. 3, 2000 when it defeated Lamar 95-58
- Junior Marvin Williams posted a game-high 19 points against No. 5 Kansas in the season opener, outscoring Andrew Wiggins who was named Preseason National Player of the Year by cbssports.com. Williams went 8-for-13 from the field and grabbed a team-high six rebounds in 24 minutes. Wiggins scored 16.
- ULM earned the 2012-13 SBC team academic award and was one of 21 NCAA Division I men's basketball programs to earn Team Academic Excellence Awards from the National Association of Basketball Coaches
- The Warhawks carry a full scholarship roster for the first time under head coach Keith Richard after inheriting APR penalties. Richard is in his fourth season with the program



# Warhawks Men's Basketball

University of Louisiana at Monroe



## Numerical Roster

| No. | Player             | Pos. | Ht.  | Wt. | Cl. | Hometown (Previous School)                 |
|-----|--------------------|------|------|-----|-----|--|
| 0   | Marvin Williams    | F/C  | 6-8  | 245 | JR  | Memphis, Tenn. (NW Florida State College)  |
| 1   | Jayon James        | F    | 6-6  | 225 | SR  | Paterson, N.J. (Lamar State-Port Arthur)   |
| 2   | DeMondre Harvey    | F    | 6-7  | 210 | SO  | Minden, La. (Pearl River CC)               |
| 3   | Marcelis Hansberry | G    | 6-0  | 185 | SR  | Jackson, Miss. (Provine HS)                |
| 4   | RJ McCray          | G    | 6-2  | 190 | SR  | Arlington, Texas (Grace Prep Academy)      |
| 10  | Amos Olatayo       | G    | 6-4  | 200 | SR  | Houston, Texas (Navarro College)           |
| 11  | Nick Coppola       | G    | 5-11 | 195 | FR  | Richmond, Va. (Benedictine Prep)           |
| 12  | Tylor Ongwae       | F    | 6-7  | 205 | JR  | Eldoret, Kenya (Ranger College)            |
| 13  | Chinedu Amajoyi    | G    | 6-3  | 195 | JR  | Rancho Cucamonga, Calif. (Kilgore College) |
| 15  | Kyle Koszuta       | G    | 6-2  | 190 | SO  | Niceville, Fla. (Niceville HS)             |
| 20  | Evan Sims          | F/C  | 6-8  | 235 | JR  | Houston, Texas (Lamar State-Port Arthur)   |
| 22  | Lance Richard      | G    | 5-10 | 170 | FR  | Monroe, La. (Sterlington HS)               |
| 23  | Millaun Brown      | F/C  | 6-7  | 230 | SR  | Gunnison, Miss. (East Mississippi CC)      |
| 33  | Daniel Grieves     | G/F  | 6-6  | 210 | SO  | Bay St. Louis, Miss. (Pearl River CC)      |
| 34  | Leon Carswell II   | F    | 6-3  | 210 | JR  | Bossier City, La. (Airline HS)             |
| 35  | Colten Ponder      | F    | 6-5  | 215 | SO  | Shreveport, La. (Calvary Baptist HS)       |

## COACHING STAFF

Head Coach: Keith Richard (ULM '82)

Assistant Coach: Ryan Cross (Buffalo '95)

Assistant Coach: Lonnie Cooper (Louisiana Tech '99)

Assistant Coach J.A. Anglin (LSU Shreveport '10)

Coordinator of Basketball Operations: Wyatt Hodges

## PRONUNCIATION

Keith/Lance RICHARD      Ree-CHARD

MILLAUN Brown      Mih-LAHN

JAYON James      Jay-AHN

AMOS OLATAYO      AIM-uhs Ole-ah-tay-O

CHINEDU AMAJOYI      Chin-ih-due Om-uh-joy

TYLOR ONGWAE

Kyle KOSZUTA

Nick COPPOLA

Tie-ler Ong-why

Kus-zoo-tuh

Cup-oh-luh

## BY CLASS

Seniors (5).....Millaun Brown  
 .....Marcelis Hansberry  
 .....Jayon James  
 .....R.J. McCray  
 .....Amos Olatayo  
 Juniors (5).....Chinedu Amajoyi  
 .....Leon Carswell  
 .....Tylor Ongwae  
 .....Evan Sims  
 .....Marvin Williams  
 Sophomores (4) .....Daniel Grieves  
 .....DeMondre Harvey  
 .....Kyle Koszuta  
 .....Colten Ponder  
 Freshmen (2).....Nick Coppola  
 .....Lance Richard

## BY POSITION

Guards.....Chinedu Amajoyi  
 .....Nick Coppola  
 .....Marcelis Hansberry  
 .....Kyle Koszuta  
 .....RJ McCray  
 .....Amos Olatayo  
 .....Lance Richard  
 Guard/Foward .....Daniel Grieves  
 Forwards .....Leon Carswell  
 .....DeMondre Harvey  
 .....Jayon James  
 .....Tylor Ongwae  
 .....Colten Ponder  
 Forward/Center .....Millaun Brown  
 .....Evan Sims  
 .....Marvin Williams

## BY STATE/COUNTRY

California.....Chinedu Amajoyi  
 Florida.....Kyle Koszuta  
 Kenya .....Tylor Ongwae  
 Louisiana.....Leon Carswell  
 .....DeMondre Harvey  
 .....Colten Ponder  
 .....Lance Richard  
 Mississippi.....Millaun Brown  
 .....Daniel Grieves  
 .....Marcelis Hansberry  
 New Jersey .....Jayon James  
 Tennessee .....Marvin Williams  
 Texas .....R.J. McCray  
 .....Amos Olatayo  
 .....Evan Sims  
 Virginia .....Nick Coppola

## WE ARE ULM

### 12 REGULAR SEASON CHAMPIONSHIPS

1961-62 - Gulf States Conference  
 1964-65 - Gulf States Conference  
 1978-79 - Atlantic Sun Conference  
 1979-80 - Atlantic Sun Conference  
 1985-86 - Southland Conference  
 1989-90 - Southland Conference  
 1990-91 - Southland Conference  
 1992-93 - Southland Conference  
 1993-94 - Southland Conference  
 1995-96 - Southland Conference  
 1996-97 - Southland Conference  
 2006-07 - Sun Belt Conference West Division

### NINE POST-SEASON APPEARANCES

1978-79 - NIT  
 1981-82 - NCAA Tournament  
 1985-86 - NCAA Tournament  
 1987-88 - NIT  
 1989-90 - NCAA Tournament  
 1990-91 - NCAA Tournament  
 1991-92 - NCAA Tournament  
 1992-93 - NCAA Tournament  
 1995-96 - NCAA Tournament

### EIGHT TOURNAMENT CHAMPIONSHIPS

1978-79 - Atlantic Sun Conference  
 1981-82 - Atlantic Sun Conference  
 1985-86 - Southland Conference  
 1989-90 - Southland Conference  
 1990-91 - Southland Conference  
 1991-92 - Southland Conference  
 1992-93 - Southland Conference  
 1995-96 - Southland Conference



# Warhawks Men's Basketball

University of Louisiana at Monroe



## ULM Quick Facts

Location \_\_\_\_\_ Monroe, La.  
Enrollment \_\_\_\_\_ 8,858  
Founded \_\_\_\_\_ 1931  
Nickname/Mascot \_\_\_\_\_ Warhawks/Ace  
Colors \_\_\_\_\_ Maroon & Gold  
President \_\_\_\_\_ Dr. Nick Bruno  
Director of Athletics \_\_\_\_\_ Brian Wickstrom  
Conference \_\_\_\_\_ Sun Belt  
Affiliation \_\_\_\_\_ NCAA Division I  
All-Time Record \_\_\_\_\_ 906-803 (62nd season)  
Winning Seasons \_\_\_\_\_ 38 (20+ wins 10 times)  
Home Venue \_\_\_\_\_ Fant-Ewing Coliseum (7000)  
Playing Surface \_\_\_\_\_ Maple  
Opened \_\_\_\_\_ 1971  
Press Row Phone \_\_\_\_\_ 318-342-6920

Head Coach \_\_\_\_\_ Keith Richard  
Record at ULM \_\_\_\_\_ 20-85 (fourth year)  
Career Record \_\_\_\_\_ 170-197 (13th year)  
Assistant Coach \_\_\_\_\_ Ryan Cross  
Assistant Coach \_\_\_\_\_ Lonnie Cooper  
Assistant Coach \_\_\_\_\_ J.A. Anglin  
Coordinator of MBB Ops. \_\_\_\_\_ Wyatt Hodges  
Athletic Trainer \_\_\_\_\_ Jeremy Teblum  
Strength Coach \_\_\_\_\_ Brian Seitz

Website \_\_\_\_\_ [www.ulmwarhawks.com](http://www.ulmwarhawks.com)  
Facebook \_\_\_\_\_ [www.facebook.com/warhawks](http://www.facebook.com/warhawks)  
Twitter \_\_\_\_\_ @ULM\_MBB

## Scouting Georgia State

In its first season in the Sun Belt Conference, Georgia State has yet to lose a game. It is off to a 13-6 overall start and 6-0 in league action. It is coming off a 77-70 road victory over UL-Lafayette on Thursday. It's closest SBC game was a 73-72 win over Arkansas State on Jan. 16. The Panthers have also won 10 games in a row.

In conference games, R.J. Hunter (the coach's son) leads the league with 24.7 points per game and 3.5 made three-pointers per contest. He averages 19.8 points per game on the season and also leads the team in free throw percentage (.898) and steals (35). Ryan Harrow also heavily aids the attack with 17.8 points per game and Manny Atkins puts in 13.8 points and is shooting .449 from three-point range (40-for-89).

As a team in SBC games, the Panthers lead the league in scoring margin (+12.7), free throw percentage (.816), field goal percentage (.475), field goal percentage defense (.391), turnover margin (+7.7) and assist/turnover ratio (1.8).

Ron Hunter is in his third year as head coach for the Panthers. In his first season GSU won 22 games (second most in school history) and advanced to the second round of the CollegeInsider.com Postseason Tournament. It was just the fourth postseason appearance in school history.

Hunter is 50-34 at GSU and 323-253 in his 20th year of coaching.

### Sun Belt Conference

#### Preseason Coaches Poll

1. WKU - 91 (5)
2. South Alabama - 78 (2)
3. Arkansas State - 74
- T-4. Georgia State - 73 (2)
- T-4. UL-Lafayette - 73 (1)
6. UALR - 48
7. UT Arlington - 36
8. Texas State - 34
9. Troy - 26
10. ULM - 17

### Jayon James

- Preseason SBC  
All-Conference  
Third-Team

- CSM Preseason  
All-SBC  
Third-Team

### Amos Olatayo

- CSM Preseason  
All-SBC  
Third-Team

### All-Time Series History vs. Georgia State

ULM leads 5-0  
At ULM: ULM leads 3-0  
At GSU: ULM leads 2-0

### 2013-14 NON-CONFERENCE STRENGTH OF SCHEDULE RANKINGS

according to cbssports.com (1/1/14)

| RK        | School           | SOS          | Opp. Winning % |
|-----------|------------------|--------------|----------------|
| 1.        | New Orleans      | .6951        | .7669          |
| 2.        | Kansas           | .6840        | .7500          |
| 3.        | Long Beach State | .6443        | .7166          |
| 4.        | BYU              | .6323        | .6949          |
| 5.        | Massachusetts    | .6262        | .6574          |
| 6.        | Eastern Michigan | .6192        | .6448          |
| 7.        | Colorado         | .6162        | .6597          |
| <b>8.</b> | <b>ULM</b>       | <b>.6152</b> | <b>.6744</b>   |
| 9.        | Alabama          | .6142        | .6468          |
| 10.       | Oakland          | .6130        | .6585          |

### RICHARD VS. 2013-14 OPPONENTS

|                      |                 |
|----------------------|-----------------|
| Arkansas State       | .....5-8        |
| <b>Georgia State</b> | <b>.....0-0</b> |
| Kansas               | .....0-1        |
| Louisiana Tech       | .....0-4        |
| UL-Lafayette         | .....7-11       |
| LSU                  | .....0-2        |
| Northwestern State   | .....2-1        |
| Ohio State           | .....0-1        |
| Ole Miss             | .....0-2        |
| Samford              | .....1-0        |
| South Alabama        | .....5-5        |
| Texas-Arlington      | .....0-1        |
| Texas State          | .....0-1        |
| Thomas               | .....1-0        |
| Troy                 | .....1-4        |
| UALR                 | .....7-6        |
| WKU                  | .....5-8        |







# Warhawks Men's Basketball

University of Louisiana at Monroe



## Number of times in 2013-14 a ULM student-athlete has led the team in...

|                            |   |                            |   |                 |   |
|----------------------------|---|----------------------------|---|-----------------|---|
| <b>Points</b>              |   | Daniel Grieves             | 1 | <b>Blocks</b>   |   |
| Tylor Ongwae               | 8 | Marvin Williams            | 1 | Tylor Ongwae    | 5 |
| Amos Olatayo               | 3 |                            |   | Amos Olatayo    | 4 |
| Marvin Williams            | 2 | <b>Free Throws Made</b>    |   | DeMondre Harvey | 4 |
| Jayon James                | 1 | Tylor Ongwae               | 6 | Marvin Williams | 2 |
|                            |   | Jayon James                | 4 | Jayon James     | 2 |
| <b>Rebounds</b>            |   | Amos Olatayo               | 2 | Millaun Brown   | 1 |
| Jayon James                | 5 | Nick Coppola               | 1 | Evan Sims       | 1 |
| Amos Olatayo               | 3 | Kyle Koszuta               | 1 |                 |   |
| Marvin Williams            | 3 | R.J. McCray                | 1 | <b>Steals</b>   |   |
| Tylor Ongwae               | 3 |                            |   | Jayon James     | 7 |
| DeMondre Harvey            | 2 | <b>Free Throw Attempts</b> |   | Tylor Ongwae    | 5 |
| Nick Coppola               | 1 | Jayon James                | 6 | Nick Coppola    | 4 |
|                            |   | Tylor Ongwae               | 5 | Amos Olatayo    | 3 |
| <b>Assists</b>             |   | Amos Olatayo               | 3 | R.J. McCray     | 3 |
| Jayon James                | 8 | Nick Coppola               | 2 | DeMondre Harvey | 2 |
| Nick Coppola               | 7 | R.J. McCray                | 1 | Kyle Koszuta    | 2 |
| Kyle Koszuta               | 2 | <b>3FG Made</b>            |   | Chinedu Amajoyi | 2 |
| R.J. McCray                | 2 | Daniel Grieves             | 7 | Evan Sims       | 1 |
| Daniel Grieves             | 1 | Amos Olatayo               | 7 |                 |   |
| Tylor Ongwae               | 1 | Tylor Ongwae               | 5 | <b>Minutes</b>  |   |
|                            |   | Kyle Koszuta               | 3 | Nick Coppola    | 5 |
| <b>Field Goals Made</b>    |   | Nick Coppola               | 1 | Tylor Ongwae    | 5 |
| Tylor Ongwae               | 9 | R.J. McCray                | 1 | Jayon James     | 4 |
| Amos Olatayo               | 4 |                            |   | Amos Olatayo    | 2 |
| Marvin Williams            | 2 | <b>3FG Attempts</b>        |   | Daniel Grieves  | 1 |
| Jayon James                | 1 | Daniel Grieves             | 7 | Kyle Koszuta    | 1 |
|                            |   | Amos Olatayo               | 7 | R.J. McCray     | 1 |
| <b>Field Goal Attempts</b> |   | Nick Coppola               | 1 |                 |   |
| Tylor Ongwae               | 8 | Kyle Koszuta               | 1 |                 |   |
| Amos Olatayo               | 4 |                            |   |                 |   |

*Note: If multiple student-athletes tie in a category in a single game, they all receive credit for leading the team*

## Double-Doubles

### 2013-14 Season

Marvin Williams (1)  
13 pt, 10 reb at NSU (11/21/13)

### Jayon James (1)

16 pt, 12 reb vs. ULL (1/4/14)

### Tylor Ongwae (1)

27 pt, 11 reb vs. ULL (1/4/14)

### Career

#### Jayon James (6)

10 pt, 12 reb vs SLU (12/10/12)

26 pt, 10 reb vs FAU (12/12/12)

11 pt, 12 reb vs SU (12/13/12)

19 pt, 10 reb at NT (1/5/13)

11 pt, 15 ast at FIU (2/2/13)

16 pt, 12 reb vs. ULL (1/4/14)

## Individual Career Totals for Returning Student-Athletes

*Only includes statistics at ULM*

### Points

|              |     |
|--------------|-----|
| A. Olatayo   | 549 |
| J. James     | 393 |
| M. Hansberry | 390 |
| R.J. McCray  | 384 |
| M. Brown     | 187 |
| K. Koszuta   | 132 |

### Steals

|              |    |
|--------------|----|
| R.J. McCray  | 58 |
| J. James     | 56 |
| M. Hansberry | 46 |
| A. Olatayo   | 46 |
| K. Koszuta   | 31 |
| M. Brown     | 27 |

### Field Goals M-A

|              |         |
|--------------|---------|
| A. Olatayo   | 238-517 |
| J. James     | 151-345 |
| M. Hansberry | 142-353 |
| R.J. McCray  | 137-330 |
| M. Brown     | 82-148  |
| K. Koszuta   | 43-120  |

### Free Throws M-A

|              |        |
|--------------|--------|
| A. Olatayo   | 99-170 |
| J. James     | 87-171 |
| R.J. McCray  | 80-124 |
| M. Hansberry | 80-124 |
| M. Brown     | 21-53  |
| K. Koszuta   | 15-24  |

### Rebounds

|              |     |
|--------------|-----|
| J. James     | 249 |
| A. Olatayo   | 207 |
| M. Brown     | 175 |
| R.J. McCray  | 145 |
| M. Hansberry | 137 |
| K. Koszuta   | 31  |

### Three-Pointers M-A

|              |        |
|--------------|--------|
| A. Olatayo   | 44-148 |
| K. Koszuta   | 31-81  |
| R.J. McCray  | 30-92  |
| M. Hansberry | 26-107 |
| J. James     | 4-32   |

### Assists

|              |     |
|--------------|-----|
| J. James     | 195 |
| R.J. McCray  | 120 |
| M. Hansberry | 110 |
| K. Koszuta   | 54  |
| A. Olatayo   | 31  |
| M. Brown     | 14  |

### Games/Starts

|              |       |
|--------------|-------|
| R.J. McCray  | 88/35 |
| M. Hansberry | 71/28 |
| J. James     | 41/39 |
| K. Koszuta   | 40/2  |
| M. Brown     | 38/25 |
| A. Olatayo   | 37/30 |

### Minutes

|              |      |
|--------------|------|
| R.J. McCray  | 1766 |
| M. Hansberry | 1387 |
| J. James     | 1370 |
| A. Olatayo   | 1101 |
| M. Brown     | 877  |
| K. Koszuta   | 565  |

### Blocks

|              |    |
|--------------|----|
| A. Olatayo   | 17 |
| R.J. McCray  | 14 |
| J. James     | 13 |
| M. Brown     | 10 |
| M. Hansberry | 2  |

## Double-Figures and Categorical Highs

| Double-Figures  | Season 10+ Points      | Season 10+ Rebs | Season 10+ Asts |
|-----------------|------------------------|-----------------|-----------------|
| Tylor Ongwae    | 12 times (20+ 5 times) | 1 time          |                 |
| Amos Olatayo    | 11 times (20+ 3 times) |                 |                 |
| Jayon James     | 7 times                | 2 times         |                 |
| Marvin Williams | 4 times                | 1 time          |                 |
| Nick Coppola    | 3 times                |                 |                 |
| Daniel Grieves  | 2 times                |                 |                 |
| DeMondre Harvey | 1 time                 |                 |                 |
| R.J. McCray     | 1 time                 |                 |                 |

| Double-Figures     | Career 10+ Points       | Career 10+ Rebs | Career 10+ Asts |
|--------------------|-------------------------|-----------------|-----------------|
| Amos Olatayo       | 28 times (20+ 12 times) | 1 time          |                 |
| Jayon James        | 20 times (20+ 1 time)   | 8 times         | 2 times         |
| Marcelis Hansberry | 15 times (20+ 1 time)   |                 |                 |
| R.J. McCray        | 12 times                |                 |                 |
| Tylor Ongwae       | 12 times (20+ 5 times)  | 1 time          |                 |
| Millaun Brown      | 5 times (20+ 1 time)    | 1 time          |                 |
| Marvin Williams    | 4 times                 | 1 time          |                 |
| Kyle Koszuta       | 3 times                 |                 |                 |
| Nick Coppola       | 3 times                 |                 |                 |
| Daniel Grieves     | 2 times                 |                 |                 |
| DeMondre Harvey    | 1 time                  |                 |                 |

### Single-Game Categorical Highs 2013-14

|                  |   |
|------------------|---|
| Points           | Amos Olatayo - 30, at NSU                                       |
| Field Goals Made | Amos Olatayo/Tylor Ongwae - 11 (Olatayo at NSU) (Ongwae vs ULL) |
| 3FG Made         | Amos Olatayo/Tylor Ongwae - 4 (Both at UTA)                     |
| Free Throws Made | Jayon James/Tylor Ongwae - 9 (James at NSU) (Ongwae vs. THOM)   |
| Rebounds         | Jayon James - 12 (vs. UL-Lafayette)                             |
| Assists          | Jayon James - 9 (at UTA)  |
| Steals           | Tylor Ongwae - 4 (vs. Thomas)                                   |
| Blocks           | Amos Olatayo - 5 (vs. UL-Lafayette)                             |



# Warhawks Men's Basketball

University of Louisiana at Monroe



## The Last Time ULM...

Scored 100 or more points  
Scored 90 or more points  
Scored 80 or more points  
Scored fewer than 40 points  
Held an opponent to under 50 points  
Held an opponent to under 40 points  
Won by 30 or more points  
Won by 40 or more points  
Won by 50 or more points  
Won by 60 or more points  
Had four double-digit scorers  
Had five double-digit scorers  
Had no double-digit scorers  
Had 20 or more assists  
Had fewer than 10  
Had 10 or more blocks  
Had 10 or more steals  
Had 20 or more turnovers  
Had fewer than 10 turnovers  
Made 30 or more field goals  
Made 40 or more field goals  
Made 50 or more field goals  
Shot over 50 pct from field  
Shot over 60 pct from field  
Shot less than 20 pct from field  
Made 10 or more 3-pointers  
Made 15 or more 3-pointers  
Shot over 50 pct from 3FG  
Shot over 60 pct from 3FG  
Shot less than 20 pct from 3FG  
Made 20 or more free throws  
Made 30 or more free throws  
Shot over 80 pct free throws  
Shot over 90 pct free throws  
Won on a buzzer beater  
Lost on a buzzer beater  
Won on the last possession  
Lost on the last possession  
Won in overtime  
Won in double overtime  
Won in triple overtime  
Had two double-doubles in one game  
Had two 20+ scorers in one game

## A ULM Player...

Had a double-double (pts-rbs)  
Had a double-double (pts-asts)  
Had a triple-double  
Had 20 points or more  
Had 30 points or more  
Had 40 points or more  
Had 50 points or more  
Made 10 or more field goals  
Made 15 or more field goals  
Made five or more 3FG  
Made 10 or more FT  
Had 10 or more rebounds  
Had 15 or more rebounds  
Had 20 or more rebounds  
Had 25 or more rebounds  
Had 30 or more rebounds  
Had 10 or more assists  
Had 15 or more assists  
Had five or more steals  
Had 10 or more steals  
Had five or more blocks  
Had 10 or more blocks  
Played 40 minutes or more

105, vs. UL-Lafayette (1/4/2014)  
105, vs. UL-Lafayette (1/4/2014)  
105, vs. UL-Lafayette (1/4/2014)  
36, vs. Texas State (1/11/2014)  
46, vs. Centenary (12/11/2010)  
37, vs. LeTourneau (11/25/1991)  
34, vs. Samford (11/18/2013)  
54, vs. Union College (1/3/2009)  
54, vs. Union College (1/3/2009)  
63, vs. LeTourneau (11/25/1991)  
at South Alabama (1/18/2014)  
vs. UL-Lafayette (1/4/2014)  
at No. 3 Ohio State (12/27/2013)  
20, at FIU (2/2/2013)  
7, vs. Texas State (1/11/2014)  
11, vs. UL-Lafayette (1/4/2014)  
10, at LSU (12/14/2013)  
20, vs. Thomas (12/9/2013)  
7, at South Alabama (1/18/2014)  
33, at UT Arlington (1/9/2014)  
41, vs. Texas College (12/22/2003)  
51, vs. Georgia Southern (2/8/1979)  
.520 (26-50), at Troy (1/16/2014)  
.620 (31-50), at Nicholls State (11/28/2011)  
.185 (10-54) at No. 3 Ohio State (12/27/2013)  
10, at UT Arlington (1/9/2014)  
15, vs. Middle Tennessee (1/24/2008)  
.643 (9-14), at Troy (1/16/2014)  
.643 (9-14), at Troy (1/16/2014)  
.188 (3-16), vs. WKU (1/23/2014)  
24, vs. UL-Lafayette (1/4/2014)  
30, vs. Troy (12/31/2009)  
.824 (14-17), at Troy (1/16/2014)  
1.000 (5-5), at Texas A&M (12/10/2011)  
W, 60-58, vs. SFA (Malcolm Thomas Jumper) (11/25/2008)  
L, 76-73, at La. Tech (Kyle Gibson 3FG) (12/2/2009)  
W, 65-64, vs. FAU (Trent Mackey 3FG, 8 secs) (12/29/2012)  
L, 65-64, vs. SFA (Zac Downing 3FG, 4 secs) (11/23/2010)  
W, 103-98 (2OT), vs. UL-Lafayette (1/4/2014)  
W, 103-98 (2OT), vs. UL-Lafayette (1/4/2014)  
W, 107-106 (3OT), at La. Tech (1/5/1970)  
Tylor Ongwae & Jayon James, vs. UL-Lafayette (1/4/2014)  
Tylor Ongwae (25) & Amos Olatayo (20), at UT Arlington (1/9/2014)

Tylor Ongwae (27-11) / Jayon James (16-12) vs. UL-Lafayette (1/4/2014)  
Jayon James (11 pts and 15 asts), at FIU (2/2/2013)  
Wojciech Mydra (11 pts, 10 rebs, 10 blks) vs. SHSU (1/24/2002)  
Tylor Ongwae (22), at Troy (1/16/2014)  
Amos Olatayo (30), at Northwestern State (11/21/2013)  
Henry Steele (40), vs. Louisiana College (1/23/1971)  
Glynn Saulters (51), vs. Nicholls State (1/1/1968)  
Tylor Ongwae (10), at UT Arlington (1/9/2014)  
Mike Smith (15), vs. Houston (12/15/1999)  
Trent Mackey (5), vs. North Texas (2/14/2013)  
Tommie Sykes (14-18), vs. Union College (1/4/2011)  
Jayon James (12) / Tylor Ongwae (11), vs. UL-Lafayette (1/4/2014)  
Lance Brasher (17), vs. Middle Tennessee (1/24/2008)  
DeAndre Alexander (20), vs. Lamar (3/2/2005)  
Calvin Natt (25), vs. Miss. State (12/5/1978)  
Calvin Natt (31) vs. Georgia Southern (12/29/1976)  
Jayon James (10), vs. Arkansas State (2/16/2013)  
Larry Sauls (19), vs. Mississippi College (1/7/1970)  
Jayon James (6), vs. WKU (3/8/2013)  
Arthur Hayes (10), vs. McNeese State (1983)  
Amos Olatayo (5), vs. UL-Lafayette (1/4/2014)  
Wojciech Myrda (13), vs. UTSA (3/2/2002)  
Nick Coppola (40), vs. WKU (1/23/2014)

## MISCELLANEOUS STATS 2013-14

### Largest halftime lead

24, vs. Thomas, 46-22

### Largest halftime deficit

21, at No. 3 OSU, 41-20

### Largest halftime lead surrendered in a loss

None (have held three halftime leads)

### Largest halftime deficit overcome in a win

7, at South Alabama, 34-27 (won 64-58)

### Largest lead any time

41, vs. Samford, 84-43, 3:01 left 2H

### Largest deficit any time

40, at No. 3 OSU, 71-31, 58 secs left 2H

### Largest margin of victory

34, vs. Samford, 86-52 (11/18/13)

### Largest margin of defeat

40, at No. 3 OSU, 71-31 (12/27/13)

### Most points scored in a half

46, vs. Thomas, first half

### Fewest points scored in a half

9, vs. Texas State, second half

### Most points allowed in a half

48, vs. LA Tech, first half

### Fewest points allowed in a half

22, vs. Thomas, first half

### Largest Rebounding Advantage

+18, vs. Thomas, 41-23

### Largest Rebounding Disadvantage

-12, at South Alabama, 46-34

### Highest Plus Turnover Differential

+5, vs. Samford, 15-10

### Highest Minus Turnover Differential

-14, at NSU, 29-15

### Most 3FG Made In a Game

10, at UT Arlington (10-23)

### Most 3FG Allowed in a Game

13, at UT Arlington (13-29)



# Warhawks Men's Basketball

University of Louisiana at Monroe



## 2013-14 ULM MEN'S BASKETBALL

Overall Stats

### ULM Combined Team Statistics (as of Jan 23, 2014)

#### All games

| RECORD:        | OVERALL | HOME | AWAY | NEUTRAL |
|----------------|---------|------|------|---------|
| ALL GAMES      | 6-8     | 3-3  | 3-5  | 0-0     |
| CONFERENCE     | 3-3     | 1-2  | 2-1  | 0-0     |
| NON-CONFERENCE | 3-5     | 2-1  | 1-4  | 0-0     |

| #              | Player            | gp-gs | min  | avg  | Total   |      | 3-Point |      | F-Throw |       | Rebounds |     |     |      | pf  | dq | a   | to  | blk | stl | pts | avg  |
|----------------|-------------------|-------|------|------|---------|------|---------|------|---------|-------|----------|-----|-----|------|-----|----|-----|-----|-----|-----|-----|------|
|                |                   |       |      |      | fg-fga  | fg%  | 3fg-fga | 3fg% | ft-fa   | ft%   | off      | def | tot | avg  |     |    |     |     |     |     |     |      |
| 12             | Ongwae, Tylor     | 14-14 | 405  | 28.9 | 77-178  | .433 | 15-45   | .333 | 47-57   | .825  | 24       | 44  | 68  | 4.9  | 33  | 2  | 18  | 22  | 13  | 14  | 216 | 15.4 |
| 10             | Olatayo, Amos     | 14-11 | 392  | 28.0 | 68-150  | .453 | 20-63   | .317 | 29-51   | .569  | 22       | 52  | 74  | 5.3  | 23  | 0  | 10  | 32  | 8   | 13  | 185 | 13.2 |
| 01             | James, Jayon      | 14-13 | 403  | 28.8 | 51-98   | .520 | 1-5     | .200 | 36-60   | .600  | 18       | 66  | 84  | 6.0  | 36  | 1  | 58  | 31  | 3   | 17  | 139 | 9.9  |
| 00             | Williams, Marvin  | 12-10 | 269  | 22.4 | 42-90   | .467 | 1-2     | .500 | 12-21   | .571  | 22       | 28  | 50  | 4.2  | 34  | 2  | 7   | 21  | 8   | 6   | 97  | 8.1  |
| 33             | Grieves, Daniel   | 12-0  | 167  | 13.9 | 20-55   | .364 | 16-44   | .364 | 2-3     | .667  | 5        | 14  | 19  | 1.6  | 20  | 0  | 4   | 6   | 0   | 4   | 58  | 4.8  |
| 11             | Coppola, Nick     | 14-14 | 415  | 29.6 | 19-61   | .311 | 6-17    | .353 | 21-34   | .618  | 6        | 35  | 41  | 2.9  | 23  | 0  | 52  | 31  | 0   | 7   | 65  | 4.6  |
| 04             | McCray, RJ        | 11-1  | 171  | 15.5 | 14-43   | .326 | 3-11    | .273 | 15-20   | .750  | 5        | 12  | 17  | 1.5  | 12  | 0  | 16  | 10  | 2   | 10  | 46  | 4.2  |
| 02             | Harvey, DeMondre  | 14-3  | 214  | 15.3 | 20-39   | .513 | 0-0     | .000 | 8-18    | .444  | 20       | 36  | 56  | 4.0  | 28  | 1  | 8   | 11  | 7   | 8   | 48  | 3.4  |
| 15             | Koszuta, Kyle     | 13-0  | 153  | 11.8 | 11-37   | .297 | 7-27    | .259 | 2-6     | .333  | 1        | 5   | 6   | 0.5  | 10  | 0  | 6   | 6   | 0   | 8   | 31  | 2.4  |
| 34             | Carswell II, Leon | 1-0   | 5    | 5.0  | 0-0     | .000 | 0-0     | .000 | 2-2     | 1.000 | 0        | 2   | 2   | 2.0  | 1   | 0  | 0   | 2   | 0   | 0   | 2   | 2.0  |
| 13             | Amajoyi, Chinedu  | 10-3  | 93   | 9.3  | 6-14    | .429 | 2-6     | .333 | 5-8     | .625  | 6        | 9   | 15  | 1.5  | 2   | 0  | 2   | 6   | 0   | 3   | 19  | 1.9  |
| 23             | Brown, Millaun    | 11-0  | 135  | 12.3 | 8-18    | .444 | 0-0     | .000 | 4-11    | .364  | 17       | 13  | 30  | 2.7  | 21  | 1  | 1   | 9   | 2   | 3   | 20  | 1.8  |
| 20             | Sims, Evan        | 7-1   | 76   | 10.9 | 3-12    | .250 | 0-1     | .000 | 1-4     | .250  | 3        | 6   | 9   | 1.3  | 16  | 1  | 2   | 5   | 2   | 1   | 7   | 1.0  |
| 35             | Ponder, Colten    | 1-0   | 2    | 2.0  | 0-0     | .000 | 0-0     | .000 | 0-0     | .000  | 0        | 0   | 0   | 0.0  | 0   | 0  | 0   | 0   | 0   | 0   | 0   | 0.0  |
| Team           |                   |       |      |      |         |      |         |      |         |       | 20       | 18  | 38  |      |     |    | 7   |     |     |     |     |      |
| Total.....     |                   | 14    | 2900 |      | 339-795 | .426 | 71-221  | .321 | 184-295 | .624  | 169      | 340 | 509 | 36.4 | 259 | 8  | 184 | 199 | 45  | 94  | 933 | 66.6 |
| Opponents..... |                   | 14    | 2900 |      | 352-799 | .441 | 93-278  | .335 | 199-299 | .666  | 160      | 346 | 506 | 36.1 | 258 | -  | 182 | 177 | 68  | 105 | 996 | 71.1 |

| TEAM STATISTICS        | ULM     | OPP     |
|------------------------|---------|---------|
| SCORING                | 933     | 996     |
| Points per game        | 66.6    | 71.1    |
| Scoring margin         | -4.5    | -       |
| FIELD GOALS-ATT        | 339-795 | 352-799 |
| Field goal pct         | .426    | .441    |
| 3 POINT FG-ATT         | 71-221  | 93-278  |
| 3-point FG pct         | .321    | .335    |
| 3-pt FG made per game  | 5.1     | 6.6     |
| FREE THROWS-ATT        | 184-295 | 199-299 |
| Free throw pct         | .624    | .666    |
| F-Throws made per game | 13.1    | 14.2    |
| REBOUNDS               | 509     | 506     |
| Rebounds per game      | 36.4    | 36.1    |
| Rebounding margin      | +0.2    | -       |
| ASSISTS                | 184     | 182     |
| Assists per game       | 13.1    | 13.0    |
| TURNOVERS              | 199     | 177     |
| Turnovers per game     | 14.2    | 12.6    |
| Turnover margin        | -1.6    | -       |
| Assist/turnover ratio  | 0.9     | 1.0     |
| STEALS                 | 94      | 105     |
| Steals per game        | 6.7     | 7.5     |
| BLOCKS                 | 45      | 68      |
| Blocks per game        | 3.2     | 4.9     |
| ATTENDANCE             | 10727   | 55416   |
| Home games-Avg/Game    | 6-1788  | 8-6927  |
| Neutral site-Avg/Game  | -       | 0-0     |

| Score by Periods | 1st | 2nd | OT | OT2 | Totals |
|------------------|-----|-----|----|-----|--------|
| ULM              | 443 | 443 | 29 | 18  | 933    |
| Opponents        | 484 | 470 | 29 | 13  | 996    |

| Date       | Opponent              | Score      | Att.  |
|------------|-----------------------|------------|-------|
| 11/08/13   | at Kansas             | L 63-80    | 16300 |
| 11/18/13   | SAMFORD               | W 86-52    | 1503  |
| 11/21/13   | at Northwestern State | Wot 84-80  | 1723  |
| 12/09/13   | THOMAS                | W 84-61    | 1001  |
| 12/14/13   | at LSU                | L 54-61    | 7623  |
| 12/18/13   | at Ole Miss           | L 62-75    | 5754  |
| 12/22/13   | LOUISIANA TECH        | L 61-83    | 4107  |
| * 01/04/14 | ULL                   | Wo2 103-98 | 1482  |
| 12/27/13   | at Ohio State         | L 31-71    | 18534 |
| * 1/9/2014 | at UT Arlington       | Lot 79-83  | 1059  |
| * 01/11/14 | TEXAS STATE           | L 36-61    | 1106  |
| * 01/16/14 | at Troy               | W 75-64    | 2038  |
| * 01/18/14 | at South Alabama      | W 64-58    | 2385  |
| * 01/23/14 | WKU                   | L 51-69    | 1528  |

\* - Conference game



**SUN BELT**<sup>TM</sup>  
CONFERENCE





# Warhawks Men's Basketball

University of Louisiana at Monroe



## 2013-14 ULM MEN'S BASKETBALL ULM Combined Team Statistics (as of Jan 23, 2014) Conference games

Conference Only

| RECORD:        | OVERALL | HOME | AWAY | NEUTRAL |
|----------------|---------|------|------|---------|
| ALL GAMES      | 3-3     | 1-2  | 2-1  | 0-0     |
| CONFERENCE     | 3-3     | 1-2  | 2-1  | 0-0     |
| NON-CONFERENCE | 0-0     | 0-0  | 0-0  | 0-0     |

| #              | Player          | gp-gs | min  | avg  | Total   |      | 3-Point |      | F-Throw |       | Rebounds |     |     |      |     |    |    |    |     |     |     |      |  |
|----------------|-----------------|-------|------|------|---------|------|---------|------|---------|-------|----------|-----|-----|------|-----|----|----|----|-----|-----|-----|------|--|
|                |                 |       |      |      | fg-fga  | fg%  | 3fg-fga | 3fg% | ft-fa   | ft%   | off      | def | tot | avg  | pf  | dq | a  | to | blk | stl | pts | avg  |  |
| 12             | Ongwae,Tylor    | 6-6   | 217  | 36.2 | 43-101  | .426 | 9-28    | .321 | 21-25   | .840  | 11       | 23  | 34  | 5.7  | 16  | 1  | 7  | 10 | 5   | 5   | 116 | 19.3 |  |
| 10             | Olatayo,Amos    | 6-3   | 175  | 29.2 | 24-62   | .387 | 9-34    | .265 | 15-27   | .556  | 8        | 22  | 30  | 5.0  | 7   | 0  | 4  | 14 | 6   | 5   | 72  | 12.0 |  |
| 01             | James,Jayon     | 6-5   | 175  | 29.2 | 25-41   | .610 | 1-3     | .333 | 10-23   | .435  | 6        | 25  | 31  | 5.2  | 16  | 1  | 29 | 13 | 0   | 7   | 61  | 10.2 |  |
| 33             | Grievies,Daniel | 4-0   | 60   | 15.0 | 8-22    | .364 | 7-19    | .368 | 2-2     | 1.000 | 3        | 5   | 8   | 2.0  | 6   | 0  | 0  | 0  | 0   | 2   | 25  | 6.3  |  |
| 00             | Williams,Marvin | 4-3   | 82   | 20.5 | 10-25   | .400 | 0-0     | .000 | 4-5     | .800  | 9        | 7   | 16  | 4.0  | 10  | 0  | 3  | 4  | 3   | 2   | 24  | 6.0  |  |
| 11             | Coppola,Nick    | 6-6   | 202  | 33.7 | 9-25    | .360 | 4-7     | .571 | 13-22   | .591  | 3        | 17  | 20  | 3.3  | 12  | 0  | 19 | 9  | 0   | 4   | 35  | 5.8  |  |
| 04             | McCray,RJ       | 3-0   | 60   | 20.0 | 4-15    | .267 | 1-6     | .167 | 5-8     | .625  | 2        | 2   | 4   | 1.3  | 7   | 0  | 4  | 2  | 1   | 3   | 14  | 4.7  |  |
| 02             | Harvey,DeMondre | 6-3   | 108  | 18.0 | 12-21   | .571 | 0-0     | .000 | 2-7     | .286  | 9        | 10  | 19  | 3.2  | 14  | 1  | 3  | 3  | 5   | 1   | 26  | 4.3  |  |
| 23             | Brown,Millaun   | 3-0   | 50   | 16.7 | 4-7     | .571 | 0-0     | .000 | 1-7     | .143  | 9        | 3   | 12  | 4.0  | 5   | 0  | 1  | 2  | 1   | 1   | 9   | 3.0  |  |
| 13             | Amajoyi,Chinedu | 4-3   | 62   | 15.5 | 3-7     | .429 | 2-4     | .500 | 1-2     | .500  | 3        | 5   | 8   | 2.0  | 1   | 0  | 2  | 3  | 0   | 2   | 9   | 2.3  |  |
| 15             | Koszuta,Kyle    | 5-0   | 46   | 9.2  | 3-10    | .300 | 3-8     | .375 | 2-6     | .333  | 0        | 2   | 2   | 0.4  | 3   | 0  | 3  | 1  | 0   | 2   | 11  | 2.2  |  |
| 20             | Sims,Evan       | 3-1   | 38   | 12.7 | 3-4     | .750 | 0-0     | .000 | 0-0     | .000  | 1        | 2   | 3   | 1.0  | 8   | 1  | 1  | 0  | 1   | 1   | 6   | 2.0  |  |
| Team           |                 |       |      |      |         |      |         |      |         |       | 8        | 8   | 16  | 2    |     |    |    |    |     |     |     |      |  |
| Total.....     |                 | 6     | 1275 |      | 148-340 | .435 | 36-109  | .330 | 76-134  | .567  | 72       | 131 | 203 | 33.8 | 105 | 4  | 76 | 63 | 22  | 35  | 408 | 68.0 |  |
| Opponents..... |                 | 6     | 1275 |      | 151-337 | .448 | 46-124  | .371 | 85-126  | .675  | 77       | 151 | 228 | 38.0 | 115 | -  | 75 | 71 | 23  | 32  | 433 | 72.2 |  |

| TEAM STATISTICS        | ULM     | OPP     |
|------------------------|---------|---------|
| SCORING                | 408     | 433     |
| Points per game        | 68.0    | 72.2    |
| Scoring margin         | -4.2    | -       |
| FIELD GOALS-ATT        | 148-340 | 151-337 |
| Field goal pct         | .435    | .448    |
| 3 POINT FG-ATT         | 36-109  | 46-124  |
| 3-point FG pct         | .330    | .371    |
| 3-pt FG made per game  | 6.0     | 7.7     |
| FREE THROWS-ATT        | 76-134  | 85-126  |
| Free throw pct         | .567    | .675    |
| F-Throws made per game | 12.7    | 14.2    |
| REBOUNDS               | 203     | 228     |
| Rebounds per game      | 33.8    | 38.0    |
| Rebounding margin      | -4.2    | -       |
| ASSISTS                | 76      | 75      |
| Assists per game       | 12.7    | 12.5    |
| TURNOVERS              | 63      | 71      |
| Turnovers per game     | 10.5    | 11.8    |
| Turnover margin        | +1.3    | -       |
| Assist/turnover ratio  | 1.2     | 1.1     |
| STEALS                 | 35      | 32      |
| Steals per game        | 5.8     | 5.3     |
| BLOCKS                 | 22      | 23      |
| Blocks per game        | 3.7     | 3.8     |
| ATTENDANCE             | 4116    | 5482    |
| Home games-Avg/Game    | 3-1372  | 3-1827  |
| Neutral site-Avg/Game  | -       | 0-0     |

| Score by Periods | 1st | 2nd | OT | OT2 | Totals |
|------------------|-----|-----|----|-----|--------|
| ULM              | 183 | 188 | 19 | 18  | 408    |
| Opponents        | 201 | 196 | 23 | 13  | 433    |

| Date       | Opponent         | Score      | Att. |
|------------|------------------|------------|------|
| * 01/04/14 | ULL              | Wo2 103-98 | 1482 |
| * 1/9/2014 | at UT Arlington  | Lot 79-83  | 1059 |
| * 01/11/14 | TEXAS STATE      | L 36-61    | 1106 |
| * 01/16/14 | at Troy          | W 75-64    | 2038 |
| * 01/18/14 | at South Alabama | W 64-58    | 2385 |
| * 01/23/14 | WKU              | L 51-69    | 1528 |

\* - Conference game

### Number of ULM Double-Figure Scorers by Game

#### Five Double-Figure Scorers (1)

vs. ULL  
(Ongwae/Olatayo/James/Williams/McCray)

#### Four Double-Figure Scorers (5)

vs. Samford (Olatayo/James/Ongwae/  
Grievies)  
at NSU (Olatayo/James/Williams/Ongwae)  
vs. Thomas (Ongwae/Harvey/Williams/  
James)  
at Troy (Ongwae/James/Coppola/Olatayo)  
at USA (Ongwae/Olatayo/Coppola/Grievies)

#### Three Double-Figure Scorers (4)

at No. 5 Kansas (Williams/Olatayo/Coppola)  
at LSU (Williams/Olatayo/Ongwae)  
vs. LA Tech (Ongwae/James/Olatayo)  
at UTA (Ongwae/Olatayo/James)

#### Two Double-Figure Scorers (2)

at Ole Miss (Olatayo/Ongwae)  
vs. WKU (Olatayo/Ongwae)

#### One Double-Figure Scorer (1)

vs. Texas State (Ongwae)

#### Zero Double-Figure Scorers (1)

at No. 3 Ohio State



|        | Season-High           | Career-High           |
|--------|-----------------------|-----------------------|
| Pts    | 19, at KU (11/8/13)   | 19, at KU (11/8/13)   |
| FG     | 8, at KU (11/8/13)    | 8, at KU (11/8/13)    |
| 3FG    | 1, vs. SAM (11/18/13) | 1, vs. SAM (11/18/13) |
| FT     | 4, two times          | 4, two times          |
| Ast    | 2, two times          | 2, two times          |
| Reb    | 10, at NSU (11/21/13) | 10, at NSU (11/21/13) |
| Blocks | 3, vs. Thom (12/9/13) | 3, vs. Thom (12/9/13) |
| Steals | 1, five times         | 1, five times         |
| Min    | 33, at NSU (11/21/13) | 33, at NSU (11/21/13) |

|        |    |     |            |          |            |          |      |   |    |   |   |        |
|--------|----|-----|------------|----------|------------|----------|------|---|----|---|---|--------|
| Totals | 10 | 269 | 42-90/.467 | 1-2/.500 | 12-21/.571 | 22-28-50 | 34-2 | 7 | 21 | 8 | 9 | 99/8.1 |
|--------|----|-----|------------|----------|------------|----------|------|---|----|---|---|--------|



|        | Season-High               | Career-High               |
|--------|---------------------------|---------------------------|
| Pts    | 11, vs. Thom (12/9/13)    | 11, vs. Thom (12/9/13)    |
| FG     | 4, vs. Thom (12/9/13)     | 4, vs. Thom (12/9/13)     |
| 3FG    | N/A                       | N/A                       |
| FT     | 3, vs. Thom (12/9/13)     | 3, vs. Thom (12/9/13)     |
| Ast    | 2, vs. LA Tech (12/22/13) | 2, vs. LA Tech (12/22/13) |
| Reb    | 8, at Miss (12/18/13)     | 8, at Miss (12/18/13)     |
| Blocks | 2, two times              | 2, two times              |
| Steals | 2, vs. LA Tech (12/22/13) | 2, vs. LA Tech (12/22/13) |
| Min    | 25, vs. WKU (1/23/14)     | 25, vs. WKU (1/23/14)     |

|        |   |     |            |     |           |          |      |   |    |   |   |        |
|--------|---|-----|------------|-----|-----------|----------|------|---|----|---|---|--------|
| Totals | 3 | 214 | 20-39/.513 | 0-0 | 8-18/.444 | 20-36-56 | 28-1 | 8 | 11 | 7 | 8 | 48/3.4 |
|--------|---|-----|------------|-----|-----------|----------|------|---|----|---|---|--------|



|        | Season-High           | Career-High            |
|--------|-----------------------|------------------------|
| Pts    | 17, at NSU (11/21/13) | 26, vs. FAU (12/29/13) |
| FG     | 7, at UTA (1/9/14)    | 12, vs. FAU (12/29/13) |
| 3FG    | 1, vs. TXST (1/11/14) | 3, at UALR (12/1/12)   |
| FT     | 9, at NSU (11/21/13)  | 9, at NSU (11/21/13)   |
| Ast    | 9, at UTA (1/9/14)    | 15, at FAU (2/2/13)    |
| Reb    | 12, vs. ULL (1/4/14)  | 12, three times        |
| Blocks | 1, three times        | 3, vs. ULL (3/2/13)    |
| Steals | 3, at Miss (12/13/13) | 6, vs. WKU (3/8/13)    |
| Min    | 38, vs. ULL (1/4/14)  | 42, vs. Troy (1/26/13) |

|        |    |     |            |     |            |          |      |    |    |   |    |         |
|--------|----|-----|------------|-----|------------|----------|------|----|----|---|----|---------|
| Totals | 13 | 403 | 51-99/.520 | 1-5 | 36-60/.600 | 18-66-84 | 36-1 | 58 | 31 | 3 | 17 | 139/9.9 |
|--------|----|-----|------------|-----|------------|----------|------|----|----|---|----|---------|



|        | Season-High | Career-High          |
|--------|-------------|----------------------|
| Pts    | N/A         | 22, at UALR (2/4/12) |
| FG     | N/A         | 7, at USA (1/17/13)  |
| 3FG    | N/A         | 3, at UALR (2/4/12)  |
| FT     | N/A         | 5, at NT (2/16/12)   |
| Ast    | N/A         | 9, at USA (2/11/12)  |
| Reb    | N/A         | 9, at NT (2/16/12)   |
| Blocks | N/A         | 1, two times         |
| Steals | N/A         | 4, at USA (1/17/13)  |
| Min    | N/A         | 37, at FAU (1/31/13) |

| Totals | ACL Injury |
|--------|------------|
|--------|------------|



## 4 R.J. McCray

Senior | Guard | 6-2 | 190

Arlington, Texas | Grace Prep Academy

|        | Season-High          | Career-High                |
|--------|----------------------|----------------------------|
| Pts    | 11, vs. ULL (1/4/14) | 17, at SLU (12/10/12)      |
| FG     | 3, two times         | 5, at NT (1/5/13)          |
| 3FG    | 1, three times       | 3, vs. Troy (1/26/13)      |
| FT     | 5, vs. ULL (1/4/14)  | 6, vs. Southern (12/13/12) |
| Ast    | 5, at LSU (12/14/13) | 7, vs. UALR (2/7/13)       |
| Reb    | 5, at LSU (12/14/13) | 5, at LSU (12/14/13)       |
| Blocks | 1, two times         | 2, at Tennessee (11/16/11) |
| Steals | 2, three times       | 4, vs. WKU (12/29/11)      |
| Min    | 24, at UTA (1/9/14)  | 42, at SLU (12/10/12)      |

| Opponent      | Date     | GS       | Min        | FG-FGA/Pct.      | 3FG-FGA         | FT-FTA/PCT       | O-D-T          | PF-FO       | A         | TO        | Blk      | Stl       | Pts/Avg       |
|---------------|----------|----------|------------|------------------|-----------------|------------------|----------------|-------------|-----------|-----------|----------|-----------|---------------|
| Kansas        | 11/8/13  | 9        | 1-2/500    | 0-0              | 3-4/750         | 0-0-0            | 1-0            | 0           | 0         | 0         | 0        | 0         | 5/5.0         |
| Samford       | 11/18/13 | 14       | 1-4/250    | 0-2              | 3-3/1000        | 0-1-1            | 0-0            | 2           | 0         | 0         | 2        | 0         | 5/5.0         |
| NSU           | 11/21/13 | 11       | 1-3/333    | 0-1              | 1-2/500         | 0-0-0            | 0-0            | 0           | 1         | 0         | 0        | 0         | 3/4.3         |
| Thomas        | 12/9/13  | 18       | 2-3/667    | 0-0              | 0-0/000         | 0-1-1            | 0-0            | 4           | 2         | 0         | 1        | 0         | 4/4.3         |
| LSU           | 12/14/13 | 11       | 0-1/000    | 0-0              | 2-2/1000        | 2-3-5            | 2-0            | 5           | 1         | 0         | 2        | 0         | 2/3.8         |
| Ole Miss      | 12/18/13 | 9        | 1-3/333    | 0-0              | 1-1/1000        | 0-1-1            | 1-0            | 1           | 1         | 1         | 0        | 0         | 3/3.7         |
| La. Tech      | 12/22/13 | *        | 18         | 3-7/429          | 1-1             | 0-0/000          | 0-2-2          | 1-0         | 0         | 2         | 0        | 1         | 7/4.1         |
| OSU           | 12/27/13 | 21       | 1-5/200    | 1-1              | 0-0/000         | 1-2-3            | 0-0            | 0           | 1         | 0         | 1        | 0         | 3/4.0         |
| ULL           | 1/4/14   | 23       | 3-8/375    | 0-2              | 5-8/625         | 0-0-0            | 0-0            | 1           | 0         | 0         | 1        | 0         | 11/4.8        |
| UTA           | 1/9/14   | 24       | 1-5/200    | 1-2              | 0-0/000         | 2-2-4            | 4-0            | 3           | 1         | 1         | 2        | 0         | 3/4.6         |
| TX ST         | 1/11/14  | 13       | 0-2/000    | 0-2              | 0-0/000         | 0-0-0            | 3-0            | 0           | 1         | 0         | 0        | 0         | 0/4.2         |
| Troy          | 1/16/14  |          |            |                  | DNP             |                  |                |             |           |           |          |           |               |
| USA           | 1/18/14  |          |            |                  | DNP             |                  |                |             |           |           |          |           |               |
| WKU           | 1/23/14  |          |            |                  | DNP             |                  |                |             |           |           |          |           |               |
| GSU           |          |          |            |                  |                 |                  |                |             |           |           |          |           |               |
| ASU           |          |          |            |                  |                 |                  |                |             |           |           |          |           |               |
| ULL           |          |          |            |                  |                 |                  |                |             |           |           |          |           |               |
| TX ST         |          |          |            |                  |                 |                  |                |             |           |           |          |           |               |
| UTA           |          |          |            |                  |                 |                  |                |             |           |           |          |           |               |
| UALR          |          |          |            |                  |                 |                  |                |             |           |           |          |           |               |
| GSU           |          |          |            |                  |                 |                  |                |             |           |           |          |           |               |
| WKU           |          |          |            |                  |                 |                  |                |             |           |           |          |           |               |
| USA           |          |          |            |                  |                 |                  |                |             |           |           |          |           |               |
| Troy          |          |          |            |                  |                 |                  |                |             |           |           |          |           |               |
| ASU           |          |          |            |                  |                 |                  |                |             |           |           |          |           |               |
| UALR          |          |          |            |                  |                 |                  |                |             |           |           |          |           |               |
| <b>Totals</b> |          | <b>1</b> | <b>171</b> | <b>14-43/326</b> | <b>3-11/273</b> | <b>15-20/750</b> | <b>5-12-17</b> | <b>12-0</b> | <b>16</b> | <b>10</b> | <b>2</b> | <b>10</b> | <b>49/4.2</b> |



## 11 Nick Coppola

Freshman | Guard | 5-11 | 195

Richmond, Va. | Benedictine Prep

|        | Season-High          | Career-High          |
|--------|----------------------|----------------------|
| Pts    | 10, three times      | 10, three times      |
| FG     | 3, three times       | 3, three times       |
| 3FG    | 2, at Troy (1/16/14) | 2, at Troy (1/16/14) |
| FT     | 5, at KU (11/8/13)   | 5, at KU (11/8/13)   |
| Ast    | 8, at NSU (11/21/13) | 8, at NSU (11/21/13) |
| Reb    | 6, vs. WKU (1/23/14) | 6, vs. WKU (1/23/14) |
| Blocks | N/A                  | N/A                  |
| Steals | 2, two times         | 2, two times         |
| Min    | 40, three times      | 40, three times      |

| Opponent      | Date     | GS        | Min        | FG-FGA/Pct.      | 3FG-FGA         | FT-FTA/PCT       | O-D-T          | PF-FO       | A         | TO        | Blk      | Stl      | Pts/Avg       |
|---------------|----------|-----------|------------|------------------|-----------------|------------------|----------------|-------------|-----------|-----------|----------|----------|---------------|
| Kansas        | 11/8/13  | *         | 31         | 2-5/400          | 1-3             | 5-7/714          | 0-3-3          | 0-0         | 2         | 2         | 0        | 0        | 10/10.0       |
| Samford       | 11/18/13 | *         | 26         | 2-5/400          | 0-1             | 1-3/333          | 0-3-3          | 2-0         | 6         | 0         | 0        | 0        | 5/7.5         |
| NSU           | 11/21/13 | *         | 34         | 1-5/200          | 0-1             | 0-0/000          | 0-2-2          | 3-0         | 8         | 7         | 0        | 2        | 2/5.7         |
| Thomas        | 12/9/13  | *         | 22         | 2-3/667          | 1-1             | 2-2/1000         | 0-3-3          | 0-0         | 3         | 5         | 0        | 0        | 7/6.0         |
| LSU           | 12/14/13 | *         | 29         | 0-3/000          | 0-1             | 0-0/000          | 0-2-2          | 2-0         | 4         | 2         | 0        | 0        | 0/4.8         |
| Ole Miss      | 12/18/13 | *         | 31         | 3-6/500          | 0-1             | 0-0/000          | 2-3-5          | 3-0         | 5         | 3         | 0        | 0        | 6/5.0         |
| La. Tech      | 12/22/13 | *         | 28         | 0-7/000          | 0-1             | 0-0/000          | 1-1-2          | 0-0         | 4         | 2         | 0        | 0        | 0/4.3         |
| OSU           | 12/27/13 | *         | 12         | 0-2/000          | 0-1             | 0-0/000          | 0-1-1          | 1-0         | 1         | 1         | 0        | 0        | 0/4.0         |
| ULL           | 1/4/14   | *         | 29         | 0-2/000          | 0-0             | 4-7/571          | 1-3-4          | 4-0         | 2         | 1         | 0        | 0        | 0/3.8         |
| UTA           | 1/9/14   | *         | 26         | 2-3/667          | 0-1             | 0-0/000          | 0-1-1          | 3-0         | 4         | 3         | 0        | 1        | 4/3.8         |
| TX ST         | 1/11/14  | *         | 27         | 1-4/250          | 1-1             | 0-2/000          | 1-2-3          | 0-0         | 2         | 1         | 0        | 2        | 3/3.7         |
| Troy          | 1/16/14  | *         | 40         | 3-7/429          | 2-2             | 2-2/1000         | 1-2-3          | 1-0         | 3         | 2         | 0        | 1        | 10/4.3        |
| USA           | 1/18/14  | *         | 40         | 3-7/429          | 1-2             | 3-5/600          | 0-3-3          | 3-0         | 3         | 1         | 0        | 0        | 10/4.7        |
| WKU           | 1/23/14  | *         | 40         | 0-2/000          | 0-1             | 4-6/667          | 0-6-6          | 1-0         | 5         | 1         | 0        | 1        | 4/4.6         |
| GSU           |          |           |            |                  |                 |                  |                |             |           |           |          |          |               |
| ASU           |          |           |            |                  |                 |                  |                |             |           |           |          |          |               |
| ULL           |          |           |            |                  |                 |                  |                |             |           |           |          |          |               |
| TX ST         |          |           |            |                  |                 |                  |                |             |           |           |          |          |               |
| UTA           |          |           |            |                  |                 |                  |                |             |           |           |          |          |               |
| UALR          |          |           |            |                  |                 |                  |                |             |           |           |          |          |               |
| GSU           |          |           |            |                  |                 |                  |                |             |           |           |          |          |               |
| WKU           |          |           |            |                  |                 |                  |                |             |           |           |          |          |               |
| USA           |          |           |            |                  |                 |                  |                |             |           |           |          |          |               |
| Troy          |          |           |            |                  |                 |                  |                |             |           |           |          |          |               |
| ASU           |          |           |            |                  |                 |                  |                |             |           |           |          |          |               |
| UALR          |          |           |            |                  |                 |                  |                |             |           |           |          |          |               |
| <b>Totals</b> |          | <b>14</b> | <b>415</b> | <b>19-61/311</b> | <b>6-17/353</b> | <b>21-34/618</b> | <b>6-35-41</b> | <b>23-0</b> | <b>52</b> | <b>31</b> | <b>0</b> | <b>7</b> | <b>65/4.6</b> |



## 10 Amos Olatayo

Senior | Guard | 6-4 | 200

Houston, Texas | Navarro College

|        | Season-High           | Career-High                    |
|--------|-----------------------|--------------------------------|
| Pts    | 30, at NSU (11/21/13) | 30, (previous) at FIU (2/2/13) |
| FG     | 11, at NSU (11/21/13) | 12, at FIU (2/2/13)            |
| 3FG    | 4, at UTA (1/9/14)    | 4, at UTA (1/9/14)             |
| FT     | 6, at NSU (11/21/13)  | 9, vs. ULL (3/2/13)            |
| Ast    | 3, vs. THOM (12/9/13) | 4, vs. ULL (3/2/13)            |
| Reb    | 9, at NSU (11/21/13)  | 11, at ASU (1/19/13)           |
| Blocks | 5, vs. ULL (1/4/14)   | 5, vs. ULL (1/4/14)            |
| Steals | 2, three times        | 4, vs. ULL (3/2/13)            |
| Min    | 45, vs. ULL (1/4/14)  | 45, vs. ULL (1/4/14)           |

| Opponent      | Date     | GS        | Min        | FG-FGA/Pct.       | 3FG-FGA          | FT-FTA/PCT       | O-D-T           | PF-FO       | A         | TO        | Blk      | Stl       | Pts/Avg         |
|---------------|----------|-----------|------------|-------------------|------------------|------------------|-----------------|-------------|-----------|-----------|----------|-----------|-----------------|
| Kansas        | 11/8/13  | *         | 33         | 5-10/500          | 0-2              | 1-2/500          | 1-2-3           | 3-0         | 2         | 4         | 0        | 1         | 11/11.0         |
| Samford       | 11/18/13 | *         | 25         | 10-13/769         | 2-4              | 0-0/000          | 2-2-4           | 1-0         | 0         | 2         | 1        | 1         | 22/16.5         |
| NSU           | 11/21/13 | *         | 37         | 11-13/846         | 2-2              | 6-10/600         | 2-7-9           | 4-0         | 0         | 6         | 0        | 2         | 30/21.0         |
| Thomas        | 12/9/13  | *         | 29         | 2-6/333           | 1-4              | 2-2/1000         | 1-4-5           | 1-0         | 3         | 1         | 0        | 0         | 7/17.5          |
| LSU           | 12/14/13 | *         | 28         | 4-13/308          | 0-4              | 3-4/750          | 1-7-8           | 2-0         | 0         | 1         | 1        | 1         | 11/16.2         |
| Ole Miss      | 12/18/13 | *         | 26         | 7-16/438          | 2-5              | 1-4/250          | 4-2-6           | 0-0         | 1         | 2         | 0        | 1         | 17/16.3         |
| La. Tech      | 12/22/13 | *         | 28         | 4-13/308          | 3-6              | 0-0/000          | 3-4-7           | 4-0         | 0         | 2         | 0        | 2         | 11/15.6         |
| OSU           | 12/27/13 | *         | 17         | 1-4/250           | 1-2              | 1-2/500          | 0-2-2           | 1-0         | 0         | 0         | 0        | 0         | 4/14.1          |
| ULL           | 1/4/14   | *         | 45         | 6-18/333          | 2-9              | 2-4/500          | 3-3-6           | 1-0         | 2         | 4         | 5        | 1         | 16/14.3         |
| UTA           | 1/9/14   | *         | 34         | 7-14/500          | 4-9              | 2-2/1000         | 1-7-8           | 1-0         | 0         | 2         | 0        | 1         | 20/14.9         |
| TX ST         | 1/11/14  | *         | 25         | 1-10/100          | 0-6              | 2-3/667          | 2-3-5           | 1-0         | 0         | 4         | 0        | 0         | 4/13.9          |
| Troy          | 1/16/14  | *         | 26         | 2-4/500           | 2-3              | 4-6/667          | 0-4-4           | 0-0         | 2         | 1         | 0        | 0         | 10/13.6         |
| USA           | 1/18/14  | *         | 23         | 4-7/571           | 0-3              | 4-9/444          | 0-4-4           | 2-0         | 0         | 2         | 0        | 2         | 12/13.5         |
| WKU           | 1/23/14  | *         | 22         | 4-9/444           | 1-4              | 1-3/333          | 2-1-3           | 2-0         | 0         | 1         | 1        | 1         | 10/13.2         |
| GSU           |          |           |            |                   |                  |                  |                 |             |           |           |          |           |                 |
| ASU           |          |           |            |                   |                  |                  |                 |             |           |           |          |           |                 |
| ULL           |          |           |            |                   |                  |                  |                 |             |           |           |          |           |                 |
| TX ST         |          |           |            |                   |                  |                  |                 |             |           |           |          |           |                 |
| UTA           |          |           |            |                   |                  |                  |                 |             |           |           |          |           |                 |
| UALR          |          |           |            |                   |                  |                  |                 |             |           |           |          |           |                 |
| GSU           |          |           |            |                   |                  |                  |                 |             |           |           |          |           |                 |
| WKU           |          |           |            |                   |                  |                  |                 |             |           |           |          |           |                 |
| USA           |          |           |            |                   |                  |                  |                 |             |           |           |          |           |                 |
| Troy          |          |           |            |                   |                  |                  |                 |             |           |           |          |           |                 |
| ASU           |          |           |            |                   |                  |                  |                 |             |           |           |          |           |                 |
| UALR          |          |           |            |                   |                  |                  |                 |             |           |           |          |           |                 |
| <b>Totals</b> |          | <b>11</b> | <b>392</b> | <b>68-150/453</b> | <b>20-63/317</b> | <b>29-51/569</b> | <b>22-53-74</b> | <b>23-0</b> | <b>10</b> | <b>32</b> | <b>8</b> | <b>13</b> | <b>185/13.2</b> |



## 12 Tylor Ongwae

Junior | Forward | 6-7 | 205

Eldoret, Kenya | Ranger College

|        | Season-High           | Career-High           |
|--------|-----------------------|-----------------------|
| Pts    | 27, vs. ULL (1/4/14)  | 27, vs. ULL (1/4/14)  |
| FG     | 11, vs. ULL (1/4/14)  | 11, vs. ULL (1/4/14)  |
| 3FG    | 4, at UTA (1/9/14)    | 4, at UTA (1/9/14)    |
| FT     | 9, vs. Thom (12/9/13) | 9, vs. Thom (12/9/13) |
| Ast    | 4, vs. Thom (12/9/13) | 4, vs. Thom (12/9/13) |
| Reb    | 11, vs. ULL (1/4/14)  | 11, vs. ULL (1/4/14)  |
| Blocks | 3, vs. ULL (1/4/14)   | 3, vs. ULL (1/4/14)   |
| Steals | 4, vs. Thom (12/9/13) | 4, vs. Thom (12/9/13) |
| Min    | 46, vs. ULL (1/4/14)  | 46, vs. ULL (1/4/14)  |

| Opponent | Date     | GS | Min | FG-FGA/Pct. | 3FG-FGA   | FT-FTA/PCT | O-D-T    | PF-FO | A  | TO | Blk | Stl | Pts/Avg  |
|----------|----------|----|-----|-------------|-----------|------------|----------|-------|----|----|-----|-----|----------|
| Kansas   | 11/8/13  | *  | 15  | 1-4/250     | 0-2       | 2-2/1.000  | 1-1-2    | 5-1   | 3  | 1  | 0   | 1   | 4/4.0    |
| Samford  | 11/18/13 | *  | 25  | 5-11/455    | 0-1       | 4-5/800    | 3-2-5    | 0-0   | 3  | 1  | 1   | 2   | 14/9.0   |
| NSU      | 11/21/13 | *  | 29  | 3-6/500     | 1-1       | 4-6/667    | 0-5-5    | 4-0   | 1  | 5  | 2   | 0   | 11/9.7   |
| Thomas   | 12/9/13  | *  | 28  | 6-11/545    | 1-3       | 9-10/900   | 3-4-7    | 0-0   | 4  | 0  | 1   | 4   | 22/12.8  |
| LSU      | 12/14/13 | *  | 26  | 4-10/400    | 0-0       | 4-4/1.000  | 1-2-3    | 2-0   | 0  | 1  | 0   | 2   | 12/12.6  |
| Ole Miss | 12/18/13 | *  | 21  | 4-9/444     | 2-4       | 2-2/1.000  | 0-2-2    | 2-0   | 0  | 2  | 2   | 0   | 12/12.5  |
| La. Tech | 12/22/13 | *  | 35  | 9-19/474    | 1-4       | 1-3/333    | 2-3-5    | 3-0   | 0  | 2  | 2   | 0   | 20/13.6  |
| OSU      | 12/27/13 | *  | 13  | 2-7/286     | 1-2       | 0-0/000    | 3-2-5    | 1-0   | 0  | 0  | 0   | 0   | 5/12.5   |
| ULL      | 1/4/14   | *  | 46  | 11-21/524   | 1-7       | 4-4/1.000  | 4-7-11   | 4-0   | 2  | 3  | 3   | 1   | 27/14.1  |
| UTA      | 1/9/14   | *  | 39  | 10-22/455   | 4-8       | 1-3/333    | 0-5-5    | 2-0   | 1  | 1  | 2   | 1   | 25/15.2  |
| TX ST    | 1/11/14  | *  | 29  | 5-11/455    | 2-5       | 0-0/000    | 1-2-3    | 1-0   | 1  | 1  | 0   | 0   | 12/14.9  |
| Troy     | 1/16/14  | *  | 25  | 7-15/467    | 1-2       | 7-7/1.000  | 3-2-5    | 5-1   | 0  | 2  | 0   | 0   | 22/15.5  |
| USA      | 1/18/14  | *  | 40  | 6-20/300    | 1-3       | 6-7/857    | 1-3-4    | 0-0   | 2  | 2  | 0   | 3   | 19/15.8  |
| WKU      | 1/23/14  | *  | 38  | 4-12/333    | 0-3       | 3-4/750    | 2-4-6    | 4-0   | 1  | 1  | 0   | 0   | 11/15.4  |
| GSU      |          |    |     |             |           |            |          |       |    |    |     |     |          |
| ASU      |          |    |     |             |           |            |          |       |    |    |     |     |          |
| ULL      |          |    |     |             |           |            |          |       |    |    |     |     |          |
| TX ST    |          |    |     |             |           |            |          |       |    |    |     |     |          |
| UTA      |          |    |     |             |           |            |          |       |    |    |     |     |          |
| UALR     |          |    |     |             |           |            |          |       |    |    |     |     |          |
| GSU      |          |    |     |             |           |            |          |       |    |    |     |     |          |
| WKU      |          |    |     |             |           |            |          |       |    |    |     |     |          |
| USA      |          |    |     |             |           |            |          |       |    |    |     |     |          |
| Troy     |          |    |     |             |           |            |          |       |    |    |     |     |          |
| ASU      |          |    |     |             |           |            |          |       |    |    |     |     |          |
| UALR     |          |    |     |             |           |            |          |       |    |    |     |     |          |
| Totals   |          | 14 | 405 | 77-178/433  | 15-45/333 | 47-57/825  | 24-44-68 | 33-2  | 18 | 22 | 13  | 14  | 216/15.4 |



## 13 Chinedu Amajoyi

Junior | Guard | 6-3 | 195  
Rancho Cucamonga, Calif. | Kilgore College

|        | Season-High           | Career-High           |
|--------|-----------------------|-----------------------|
| Pts    | 6, vs. SAM (11/18/13) | 6, vs. SAM (11/18/13) |
| FG     | 2, two times          | 2, two times          |
| 3FG    | 1, two times          | 1, two times          |
| FT     | 2, two times          | 2, two times          |
| Ast    | 2, at Troy (1/16/14)  | 2, at Troy (1/16/14)  |
| Reb    | 5, at OSU (12/27/13)  | 5, at OSU (12/27/13)  |
| Blocks | N/A                   | N/A                   |
| Steals | 2, vs. WKU (1/23/14)  | 2, vs. WKU (1/23/14)  |
| Min    | 29, at Troy (1/16/14) | 29, at Troy (1/16/14) |

| Opponent      | Date     | GS       | Min       | FG-FGA/Pct.      | 3FG-FGA    | FT-FTA/PCT      | O-D-T         | PF-FO      | A        | TO       | Blk      | Stl      | Pts/Avg       |
|---------------|----------|----------|-----------|------------------|------------|-----------------|---------------|------------|----------|----------|----------|----------|---------------|
| Kansas        | 11/8/13  | 3        |           | 0-0/.000         | 0-0        | 0-0/.000        | 0-0-0         | 1-0        | 0        | 0        | 0        | 0        | 0/0.0         |
| Samford       | 11/18/13 | 6        |           | 2-3/.667         | 0-1        | 2-4/.500        | 2-0-2         | 0-0        | 0        | 0        | 0        | 0        | 6/3.0         |
| NSU           | 11/21/13 | 3        |           | 1-2/.500         | 0-1        | 0-0/.000        | 0-0-0         | 0-0        | 0        | 0        | 0        | 0        | 2/2.7         |
| Thomas        | 12/9/13  | 4        |           | 0-0/.000         | 0-0        | 0-0/.000        | 0-0-0         | 0-0        | 0        | 0        | 0        | 0        | 0/2.0         |
| LSU           | 12/14/13 |          |           |                  |            | DNP             |               |            |          |          |          |          |               |
| Ole Miss      | 12/18/13 | 1        |           | 0-0/.000         | 0-0        | 0-0/.000        | 0-0-0         | 0-0        | 0        | 1        | 0        | 0        | 0/1.6         |
| La. Tech      | 12/22/13 |          |           |                  |            | DNP             |               |            |          |          |          |          |               |
| OSU           | 12/27/13 | 14       |           | 0-2/.000         | 0-0        | 2-2/1.000       | 1-4-5         | 0-0        | 0        | 2        | 0        | 1        | 2/1.7         |
| ULL           | 1/4/14   |          |           |                  |            | DNP             |               |            |          |          |          |          |               |
| UTA           | 1/9/14   |          |           |                  |            | DNP             |               |            |          |          |          |          |               |
| TX ST         | 1/11/14  | 2        |           | 0-0/.000         | 0-0        | 0-0/.000        | 0-0-0         | 0-0        | 0        | 0        | 0        | 0        | 0/1.4         |
| Troy          | 1/16/14  | *        | 29        | 2-5/.400         | 1-3        | 0-0/.000        | 2-2-4         | 1-0        | 2        | 1        | 0        | 0        | 5/1.9         |
| USA           | 1/18/14  | *        | 15        | 1-2/.500         | 1-1        | 0-0/.000        | 0-1-1         | 0-0        | 0        | 0        | 0        | 0        | 3/2.0         |
| WKU           | 1/23/14  | *        | 16        | 0-0/.000         | 0-0        | 1-2/.500        | 1-2-3         | 0-0        | 0        | 2        | 0        | 2        | 1/1.9         |
| GSU           |          |          |           |                  |            |                 |               |            |          |          |          |          |               |
| ASU           |          |          |           |                  |            |                 |               |            |          |          |          |          |               |
| ULL           |          |          |           |                  |            |                 |               |            |          |          |          |          |               |
| TX ST         |          |          |           |                  |            |                 |               |            |          |          |          |          |               |
| UTA           |          |          |           |                  |            |                 |               |            |          |          |          |          |               |
| UALR          |          |          |           |                  |            |                 |               |            |          |          |          |          |               |
| GSU           |          |          |           |                  |            |                 |               |            |          |          |          |          |               |
| WKU           |          |          |           |                  |            |                 |               |            |          |          |          |          |               |
| USA           |          |          |           |                  |            |                 |               |            |          |          |          |          |               |
| Troy          |          |          |           |                  |            |                 |               |            |          |          |          |          |               |
| ASU           |          |          |           |                  |            |                 |               |            |          |          |          |          |               |
| UALR          |          |          |           |                  |            |                 |               |            |          |          |          |          |               |
| <b>Totals</b> |          | <b>3</b> | <b>93</b> | <b>6-14/.429</b> | <b>2-6</b> | <b>5-8/.625</b> | <b>6-9-15</b> | <b>2-0</b> | <b>2</b> | <b>6</b> | <b>0</b> | <b>3</b> | <b>19/1.9</b> |



## 20 Evan Sims

Junior | Forward | 6-8 | 235  
Houston, Texas | Lamar State-Port Arthur

|        | Season-High          | Career-High          |
|--------|----------------------|----------------------|
| Pts    | 2, three times       | 2, three times       |
| FG     | 1, three times       | 1, three times       |
| 3FG    | N/A                  | N/A                  |
| FT     | 1, at KU (11/8/13)   | 1, at KU (11/8/13)   |
| Ast    | 1, two times         | 1, two times         |
| Reb    | 3, at KU (11/8/13)   | 3, at KU (11/8/13)   |
| Blocks | 1, two times         | 1, two times         |
| Steals | 1, at Troy (1/16/14) | 1, at Troy (1/16/14) |
| Min    | 18, at USA (1/18/14) | 18, at USA (1/18/14) |

| Opponent      | Date     | GS       | Min       | FG-FGA/Pct.      | 3FG-FGA    | FT-FTA/PCT      | O-D-T        | PF-FO       | A        | TO       | Blk      | Stl      | Pts/Avg      |
|---------------|----------|----------|-----------|------------------|------------|-----------------|--------------|-------------|----------|----------|----------|----------|--------------|
| Kansas        | 11/8/13  | 12       |           | 0-2/.000         | 0-0        | 1-4/.250        | 0-3-3        | 4-0         | 1        | 1        | 0        | 0        | 1/1.0        |
| Samford       | 11/18/13 | 7        |           | 0-1/.000         | 0-0        | 0-0/.000        | 0-1-1        | 1-0         | 0        | 1        | 0        | 0        | 0/0.5        |
| NSU           | 11/21/13 |          |           |                  |            | DNP             |              |             |          |          |          |          |              |
| Thomas        | 12/9/13  | 4        |           | 0-1/.000         | 0-0        | 0-0/.000        | 0-0-0        | 1-0         | 0        | 1        | 0        | 0        | 0/0.3        |
| LSU           | 12/14/13 |          |           |                  |            | DNP             |              |             |          |          |          |          |              |
| Ole Miss      | 12/18/13 |          |           |                  |            | DNP             |              |             |          |          |          |          |              |
| La. Tech      | 12/22/13 |          |           |                  |            | DNP             |              |             |          |          |          |          |              |
| OSU           | 12/27/13 | 15       |           | 0-4/.000         | 0-1        | 0-0/.000        | 2-0-2        | 2-0         | 0        | 2        | 1        | 0        | 0/0.3        |
| ULL           | 1/4/14   |          |           |                  |            | DNP             |              |             |          |          |          |          |              |
| UTA           | 1/9/14   |          |           |                  |            | DNP             |              |             |          |          |          |          |              |
| TX ST         | 1/11/14  |          |           |                  |            | DNP             |              |             |          |          |          |          |              |
| Troy          | 1/16/14  | 8        |           | 1-1/1.000        | 0-0        | 0-0/.000        | 1-0-1        | 1-0         | 0        | 0        | 0        | 1        | 2/0.6        |
| USA           | 1/18/14  | 18       |           | 1-1/1.000        | 0-0        | 0-0/.000        | 0-2-2        | 5-1         | 1        | 0        | 1        | 0        | 2/0.8        |
| WKU           | 1/23/14  | *        | 12        | 1-2/.500         | 0-0        | 0-0/.000        | 0-0-0        | 0-0         | 0        | 0        | 0        | 0        | 2/1.0        |
| GSU           |          |          |           |                  |            |                 |              |             |          |          |          |          |              |
| ASU           |          |          |           |                  |            |                 |              |             |          |          |          |          |              |
| ULL           |          |          |           |                  |            |                 |              |             |          |          |          |          |              |
| TX ST         |          |          |           |                  |            |                 |              |             |          |          |          |          |              |
| UTA           |          |          |           |                  |            |                 |              |             |          |          |          |          |              |
| UALR          |          |          |           |                  |            |                 |              |             |          |          |          |          |              |
| GSU           |          |          |           |                  |            |                 |              |             |          |          |          |          |              |
| WKU           |          |          |           |                  |            |                 |              |             |          |          |          |          |              |
| USA           |          |          |           |                  |            |                 |              |             |          |          |          |          |              |
| Troy          |          |          |           |                  |            |                 |              |             |          |          |          |          |              |
| ASU           |          |          |           |                  |            |                 |              |             |          |          |          |          |              |
| UALR          |          |          |           |                  |            |                 |              |             |          |          |          |          |              |
| <b>Totals</b> |          | <b>1</b> | <b>76</b> | <b>3-12/.250</b> | <b>0-1</b> | <b>1-4/.250</b> | <b>3-6-9</b> | <b>14-1</b> | <b>2</b> | <b>5</b> | <b>2</b> | <b>1</b> | <b>5/1.0</b> |



## 15 Kyle Koszuta

Sophomore | Guard | 6-2 | 190  
Niceville, Fla. | Niceville HS

|        | Season-High             | Career-High           |
|--------|-------------------------|-----------------------|
| Pts    | 7, vs. Thomas (12/9/13) | 15, vs. WKU (3/8/13)  |
| FG     | 3, vs. Thomas (12/9/13) | 5, vs. WKU (3/8/13)   |
| 3FG    | 2, two times            | 4, vs. WKU (3/8/13)   |
| FT     | 2, vs. TXST (1/11/14)   | 4, vs. ASU (2/16/13)  |
| Ast    | 2, vs. TXST (1/11/14)   | 6, vs. FAU (12/29/12) |
| Reb    | 2, at Miss (12/18/13)   | 3, vs. WKU (3/8/13)   |
| Blocks | N/A                     | N/A                   |
| Steals | 2, two times            | 4, vs. FAU (12/29/12) |
| Min    | 21, two times           | 36, vs. WKU (3/8/13)  |

| Opponent      | Date     | GS         | Min               | FG-FGA/Pct.      | 3FG-FGA         | FT-FTA/PCT   | O-D-T       | PF-FO    | A        | TO       | Blk      | Stl      | Pts/Avg       |
|---------------|----------|------------|-------------------|------------------|-----------------|--------------|-------------|----------|----------|----------|----------|----------|---------------|
| Kansas        | 11/8/13  | 21         |                   | 0-2/.000         | 0-1             | 0-0/.000     | 0-0-0       | 2-0      | 1        | 1        | 0        | 0        | 0/0.0         |
| Samford       | 11/18/13 | 13         |                   | 0-4/.000         | 0-3             | 0-0/.000     | 0-0-0       | 1-0      | 1        | 1        | 0        | 1        | 0/0.0         |
| NSU           | 11/21/13 | 15         |                   | 1-2/.500         | 1-2             | 0-0/.000     | 0-1-1       | 1-0      | 0        | 0        | 0        | 1        | 3/1.0         |
| Thomas        | 12/9/13  | 7          |                   | 3-3/1.000        | 1-1             | 0-0/.000     | 0-0-0       | 0-0      | 0        | 1        | 0        | 0        | 7/2.5         |
| LSU           | 12/14/13 | 12         |                   | 1-5/.200         | 0-3             | 0-0/.000     | 0-0-0       | 0-0      | 0        | 2        | 0        | 2        | 2/2.4         |
| Ole Miss      | 12/18/13 | 13         |                   | 2-6/.333         | 2-4             | 0-0/.000     | 0-2-2       | 1-0      | 0        | 0        | 0        | 0        | 6/3.0         |
| La. Tech      | 12/22/13 | 5          |                   | 1-1/1.000        | 0-0             | 0-0/.000     | 0-0-0       | 1-0      | 0        | 0        | 0        | 2        | 2/2.9         |
| OSU           | 12/27/13 | 21         |                   | 0-4/.000         | 0-4             | 0-0/.000     | 1-0-1       | 1-0      | 1        | 0        | 0        | 0        | 0/2.5         |
| ULL           | 1/4/14   | 13         |                   | 2-3/.667         | 2-2             | 0-2/.000     | 0-1-1       | 1-0      | 1        | 0        | 0        | 1        | 6/2.9         |
| UTA           | 1/9/14   | 12         |                   | 1-3/.333         | 1-3             | 0-0/.000     | 0-1-1       | 1-0      | 0        | 1        | 0        | 0        | 3/2.9         |
| TX ST         | 1/11/14  | 15         |                   | 0-3/.000         | 0-2             | 2-3/.667     | 0-0-0       | 1-0      | 2        | 0        | 0        | 1        | 2/2.8         |
| Troy          | 1/16/14  |            |                   |                  |                 | DNP          |             |          |          |          |          |          |               |
| USA           | 1/18/14  | 2          |                   | 0-0/.000         | 0-0             | 0-0/.000     | 0-0-0       | 0-0      | 0        | 0        | 0        | 0        | 0/2.6         |
| WKU           | 1/23/14  | 4          |                   | 0-1/.000         | 0-1             | 0-1/.000     | 0-0-0       | 0-0      | 0        | 0        | 0        | 0        | 0/2.4         |
| GSU           |          |            |                   |                  |                 |              |             |          |          |          |          |          |               |
| ASU           |          |            |                   |                  |                 |              |             |          |          |          |          |          |               |
| ULL           |          |            |                   |                  |                 |              |             |          |          |          |          |          |               |
| TX ST         |          |            |                   |                  |                 |              |             |          |          |          |          |          |               |
| UTA           |          |            |                   |                  |                 |              |             |          |          |          |          |          |               |
| UALR          |          |            |                   |                  |                 |              |             |          |          |          |          |          |               |
| GSU           |          |            |                   |                  |                 |              |             |          |          |          |          |          |               |
| WKU           |          |            |                   |                  |                 |              |             |          |          |          |          |          |               |
| USA           |          |            |                   |                  |                 |              |             |          |          |          |          |          |               |
| Troy          |          |            |                   |                  |                 |              |             |          |          |          |          |          |               |
| ASU           |          |            |                   |                  |                 |              |             |          |          |          |          |          |               |
| UALR          |          |            |                   |                  |                 |              |             |          |          |          |          |          |               |
| <b>Totals</b> |          | <b>153</b> | <b>11-37/.297</b> | <b>7-27/.259</b> | <b>2-6/.333</b> | <b>1-5-6</b> | <b>10-0</b> | <b>6</b> | <b>6</b> | <b>0</b> | <b>6</b> | <b>0</b> | <b>31/2.4</b> |



## 22 Lance Richard

Freshman | Guard | 5-10 | 170  
Monroe, La. | Sterlington HS

|        | Season-High | Career-High |
|--------|-------------|-------------|
| Pts    | N/A         | N/A         |
| FG     | N/A         | N/A         |
| 3FG    | N/A         | N/A         |
| FT     | N/A         | N/A         |
| Asst   | N/A         | N/A         |
| Reb    | N/A         | N/A         |
| Blocks | N/A         | N/A         |
| Steals | N/A         | N/A         |
| Min    | N/A         | N/A         |

| Opponent      | Date     | GS | Min | FG-FGA/Pct. | 3FG-FGA | FT-FTA/PCT | O-D-T | PF-FO | A | TO | Blk | Stl | Pts/Avg |
|---------------|----------|----|-----|-------------|---------|------------|-------|-------|---|----|-----|-----|---------|
| Kansas        | 11/8/13  |    |     |             |         | DNP        |       |       |   |    |     |     |         |
| Samford       | 11/18/13 |    |     |             |         | DNP        |       |       |   |    |     |     |         |
| NSU           | 11/21/13 |    |     |             |         | DNP        |       |       |   |    |     |     |         |
| Thomas        | 12/9/13  |    |     |             |         | DNP        |       |       |   |    |     |     |         |
| LSU           | 12/14/13 |    |     |             |         | DNP        |       |       |   |    |     |     |         |
| Ole Miss      | 12/18/13 |    |     |             |         | DNP        |       |       |   |    |     |     |         |
| La. Tech      | 12/22/13 |    |     |             |         | DNP        |       |       |   |    |     |     |         |
| OSU           | 12/27/13 |    |     |             |         | DNP        |       |       |   |    |     |     |         |
| ULL           | 1/4/14   |    |     |             |         | DNP        |       |       |   |    |     |     |         |
| UTA           | 1/9/14   |    |     |             |         | DNP        |       |       |   |    |     |     |         |
| TX ST         | 1/11/14  |    |     |             |         | DNP        |       |       |   |    |     |     |         |
| Troy          | 1/16/14  |    |     |             |         | DNP        |       |       |   |    |     |     |         |
| USA           | 1/18/14  |    |     |             |         | DNP        |       |       |   |    |     |     |         |
| WKU           | 1/23/14  |    |     |             |         | DNP        |       |       |   |    |     |     |         |
| GSU           |          |    |     |             |         |            |       |       |   |    |     |     |         |
| ASU           |          |    |     |             |         |            |       |       |   |    |     |     |         |
| ULL           |          |    |     |             |         |            |       |       |   |    |     |     |         |
| TX ST         |          |    |     |             |         |            |       |       |   |    |     |     |         |
| UTA           |          |    |     |             |         |            |       |       |   |    |     |     |         |
| UALR          |          |    |     |             |         |            |       |       |   |    |     |     |         |
| GSU           |          |    |     |             |         |            |       |       |   |    |     |     |         |
| WKU           |          |    |     |             |         |            |       |       |   |    |     |     |         |
| USA           |          |    |     |             |         |            |       |       |   |    |     |     |         |
| Troy          |          |    |     |             |         |            |       |       |   |    |     |     |         |
| ASU           |          |    |     |             |         |            |       |       |   |    |     |     |         |
| UALR          |          |    |     |             |         |            |       |       |   |    |     |     |         |
| <b>Totals</b> |          |    |     |             |         |            |       |       |   |    |     |     |         |

Redshirting





## 23 Millann Brown

Senior | Forward | 6-7 | 230  
Gunnison, Miss. | East Mississippi CC

|        | Season-High           | Career-High           |
|--------|-----------------------|-----------------------|
| Pts    | 5, vs. ULL (1/4/14)   | 21, vs. NT (2/14/13)  |
| FG     | 2, vs. ULL (1/4/14)   | 9, vs. NT (2/14/13)   |
| 3FG    | N/A                   | N/A                   |
| FT     | 2, at KU (11/8/13)    | 3, at NT (2/14/13)    |
| Ast    | 1, vs. TXST (1/11/14) | 4, vs. WKU (3/8/13)   |
| Reb    | 8, vs. ULL (1/4/14)   | 12, vs. WKU (2/21/13) |
| Blocks | 1, two times          | 2, at FIU (2/2/13)    |
| Steals | 1, three times        | 3, vs. LTU (11/24/12) |
| Min    | 18, two times         | 36, at ASU (1/19/13)  |

| Opponent      | Date     | GS | Min        | FG-FGA/Pct.      | 3FG-FGA    | FT-FTA/PCT       | O-D-T           | PF-FO       | A        | TO       | Blk      | Stl      | Pts/Avg       |
|---------------|----------|----|------------|------------------|------------|------------------|-----------------|-------------|----------|----------|----------|----------|---------------|
| Kansas        | 11/8/13  |    | 4          | 0-1/.000         | 0-0        | 2-2/1.000        | 0-0-0           | 2-0         | 0        | 0        | 0        | 0        | 2/2.0         |
| Samford       | 11/18/13 |    | 12         | 0-3/.000         | 0-0        | 0-0/0.000        | 3-1-4           | 3-0         | 0        | 1        | 0        | 0        | 0/1.0         |
| NSU           | 11/21/13 |    | 12         | 1-1/1.000        | 0-0        | 0-0/0.000        | 1-2-3           | 1-0         | 0        | 1        | 0        | 0        | 2/1.3         |
| Thomas        | 12/9/13  |    | 14         | 0-1/.000         | 0-0        | 1-2/.500         | 2-3-5           | 3-0         | 0        | 1        | 0        | 1        | 1/1.3         |
| LSU           | 12/14/13 |    | 12         | 1-2/.500         | 0-0        | 0-0/0.000        | 0-1-1           | 2-0         | 0        | 0        | 1        | 0        | 2/1.4         |
| Ole Miss      | 12/18/13 |    | 15         | 1-1/1.000        | 0-0        | 0-0/0.000        | 1-2-3           | 0-0         | 0        | 2        | 0        | 1        | 3/1.5         |
| La. Tech      | 12/22/13 |    | 3          | 0-0/.000         | 0-0        | 0-0/0.000        | 0-0-0           | 0-0         | 0        | 0        | 0        | 0        | 0/1.3         |
| OSU           | 12/27/13 |    | 13         | 1-2/.500         | 0-0        | 0-0/0.000        | 1-1-2           | 5-1         | 0        | 2        | 0        | 0        | 2/1.4         |
| ULL           | 1/4/14   |    | 18         | 2-4/.500         | 0-0        | 1-6/.167         | 5-3-8           | 3-0         | 0        | 1        | 1        | 0        | 5/1.8         |
| UTA           | 1/9/14   |    | 14         | 1-1/1.000        | 0-0        | 0-1/.000         | 0-0-0           | 0-0         | 0        | 0        | 0        | 1        | 2/1.8         |
| TX ST         | 1/11/14  |    | 18         | 1-2/.500         | 0-0        | 0-0/0.000        | 4-0-4           | 2-0         | 1        | 1        | 0        | 0        | 2/1.8         |
| Troy          | 1/16/14  |    |            |                  |            | DNP              |                 |             |          |          |          |          |               |
| USA           | 1/18/14  |    |            |                  |            | DNP              |                 |             |          |          |          |          |               |
| WKU           | 1/23/14  |    |            |                  |            | DNP              |                 |             |          |          |          |          |               |
| GSU           |          |    |            |                  |            |                  |                 |             |          |          |          |          |               |
| ASU           |          |    |            |                  |            |                  |                 |             |          |          |          |          |               |
| ULL           |          |    |            |                  |            |                  |                 |             |          |          |          |          |               |
| TX ST         |          |    |            |                  |            |                  |                 |             |          |          |          |          |               |
| UTA           |          |    |            |                  |            |                  |                 |             |          |          |          |          |               |
| UALR          |          |    |            |                  |            |                  |                 |             |          |          |          |          |               |
| GSU           |          |    |            |                  |            |                  |                 |             |          |          |          |          |               |
| WKU           |          |    |            |                  |            |                  |                 |             |          |          |          |          |               |
| USA           |          |    |            |                  |            |                  |                 |             |          |          |          |          |               |
| Troy          |          |    |            |                  |            |                  |                 |             |          |          |          |          |               |
| ASU           |          |    |            |                  |            |                  |                 |             |          |          |          |          |               |
| UALR          |          |    |            |                  |            |                  |                 |             |          |          |          |          |               |
| <b>Totals</b> |          |    | <b>135</b> | <b>8-18/.444</b> | <b>0-0</b> | <b>4-11/.364</b> | <b>17-13-30</b> | <b>21-1</b> | <b>1</b> | <b>9</b> | <b>2</b> | <b>3</b> | <b>20/1.8</b> |



## 34 Leon Carswell JJ

Junior | Forward | 6-3 | 225  
Bossier City, La. | Hannibal-LaGrange Univ.

|        | Season-High          | Career-High          |
|--------|----------------------|----------------------|
| Pts    | 2, at OSU (12/27/13) | 2, at OSU (12/27/13) |
| FG     | N/A                  | N/A                  |
| 3FG    | N/A                  | N/A                  |
| FT     | 2, at OSU (12/27/13) | 2, at OSU (12/27/13) |
| Ast    | N/A                  | N/A                  |
| Reb    | 2, at OSU (12/27/13) | 2, at OSU (12/27/13) |
| Blocks | N/A                  | N/A                  |
| Steals | N/A                  | N/A                  |
| Min    | 5, at OSU (12/27/13) | 5, at OSU (12/27/13) |

| Opponent      | Date     | GS | Min      | FG-FGA/Pct.     | 3FG-FGA    | FT-FTA/PCT       | O-D-T        | PF-FO      | A        | TO       | Blk      | Stl      | Pts/Avg      |
|---------------|----------|----|----------|-----------------|------------|------------------|--------------|------------|----------|----------|----------|----------|--------------|
| Kansas        | 11/8/13  |    |          |                 |            | DNP              |              |            |          |          |          |          |              |
| Samford       | 11/18/13 |    |          |                 |            | DNP              |              |            |          |          |          |          |              |
| NSU           | 11/21/13 |    |          |                 |            | DNP              |              |            |          |          |          |          |              |
| Thomas        | 12/9/13  |    |          |                 |            | DNP              |              |            |          |          |          |          |              |
| LSU           | 12/14/13 |    |          |                 |            | DNP              |              |            |          |          |          |          |              |
| Ole Miss      | 12/18/13 |    |          |                 |            | DNP              |              |            |          |          |          |          |              |
| La. Tech      | 12/22/13 |    |          |                 |            | DNP              |              |            |          |          |          |          |              |
| OSU           | 12/27/13 |    | 5        | 0-0/.000        | 0-0        | 2-2/1.000        | 0-2-2        | 1-0        | 0        | 2        | 0        | 0        | 2/2.0        |
| ULL           | 1/4/14   |    |          |                 |            | DNP              |              |            |          |          |          |          |              |
| UTA           | 1/9/14   |    |          |                 |            | DNP              |              |            |          |          |          |          |              |
| TX ST         | 1/11/14  |    |          |                 |            | DNP              |              |            |          |          |          |          |              |
| Troy          | 1/16/14  |    |          |                 |            | DNP              |              |            |          |          |          |          |              |
| USA           | 1/18/14  |    |          |                 |            | DNP              |              |            |          |          |          |          |              |
| WKU           | 1/23/14  |    |          |                 |            | DNP              |              |            |          |          |          |          |              |
| GSU           |          |    |          |                 |            |                  |              |            |          |          |          |          |              |
| ASU           |          |    |          |                 |            |                  |              |            |          |          |          |          |              |
| ULL           |          |    |          |                 |            |                  |              |            |          |          |          |          |              |
| TX ST         |          |    |          |                 |            |                  |              |            |          |          |          |          |              |
| UTA           |          |    |          |                 |            |                  |              |            |          |          |          |          |              |
| UALR          |          |    |          |                 |            |                  |              |            |          |          |          |          |              |
| GSU           |          |    |          |                 |            |                  |              |            |          |          |          |          |              |
| WKU           |          |    |          |                 |            |                  |              |            |          |          |          |          |              |
| USA           |          |    |          |                 |            |                  |              |            |          |          |          |          |              |
| Troy          |          |    |          |                 |            |                  |              |            |          |          |          |          |              |
| ASU           |          |    |          |                 |            |                  |              |            |          |          |          |          |              |
| UALR          |          |    |          |                 |            |                  |              |            |          |          |          |          |              |
| <b>Totals</b> |          |    | <b>4</b> | <b>0-0/.000</b> | <b>0-0</b> | <b>2-2/1.000</b> | <b>0-2-2</b> | <b>1-0</b> | <b>0</b> | <b>2</b> | <b>0</b> | <b>0</b> | <b>2/2.0</b> |



## 33 Daniel Grieves

Sophomore | Guard | 6-6 | 210  
Bay St. Louis, Miss. | Pearl River CC

|        | Season-High            | Career-High            |
|--------|------------------------|------------------------|
| Pts    | 13, vs. SAM (11/18/13) | 13, vs. SAM (11/18/13) |
| FG     | 5, vs. SAM (11/18/13)  | 5, vs. SAM (11/18/13)  |
| 3FG    | 3, two times           | 3, two times           |
| FT     | 2, at USA (1/18/14)    | 2, at USA (1/18/14)    |
| Ast    | 1, four times          | 1, four times          |
| Reb    | 4, at USA (1/18/14)    | 4, at USA (1/18/14)    |
| Blocks | N/A                    | N/A                    |
| Steals | 1, four times          | 1, four times          |
| Min    | 24, at USA (1/18/14)   | 24, at USA (1/18/14)   |

| Opponent      | Date     | GS | Min        | FG-FGA/Pct.       | 3FG-FGA           | FT-FTA/PCT      | O-D-T          | PF-FO       | A        | TO       | Blk      | Stl      | Pts/Avg       |
|---------------|----------|----|------------|-------------------|-------------------|-----------------|----------------|-------------|----------|----------|----------|----------|---------------|
| Kansas        | 11/8/13  |    | 6          | 2-2/1.000         | 2-2               | 0-0/0.000       | 0-1-1          | 2-0         | 0        | 1        | 0        | 0        | 6/6.0         |
| Samford       | 11/18/13 |    | 16         | 5-7/.714          | 3-5               | 0-1/0.000       | 1-2-3          | 1-0         | 1        | 1        | 0        | 1        | 13/9.5        |
| NSU           | 11/21/13 |    | 11         | 0-3/.000          | 0-3               | 0-0/0.000       | 0-2-2          | 1-0         | 0        | 2        | 0        | 1        | 0/6.3         |
| Thomas        | 12/9/13  |    | 12         | 1-2/.500          | 1-2               | 0-0/0.000       | 0-2-2          | 1-0         | 0        | 0        | 0        | 0        | 3/5.5         |
| LSU           | 12/14/13 |    | 14         | 2-5/.400          | 2-4               | 0-0/0.000       | 0-1-1          | 1-0         | 0        | 0        | 0        | 0        | 6/5.6         |
| Ole Miss      | 12/18/13 |    | 19         | 1-3/.333          | 1-2               | 0-0/0.000       | 0-0-0          | 4-0         | 1        | 1        | 0        | 0        | 4/5.2         |
| La. Tech      | 12/22/13 |    | 8          | 0-2/.000          | 0-2               | 0-0/0.000       | 0-1-1          | 1-0         | 1        | 1        | 0        | 0        | 0/4.4         |
| OSU           | 12/27/13 |    | 21         | 1-9/.111          | 0-5               | 0-0/0.000       | 1-0-1          | 3-0         | 1        | 0        | 0        | 0        | 2/4.1         |
| ULL           | 1/4/14   |    |            |                   |                   | DNP             |                |             |          |          |          |          |               |
| UTA           | 1/9/14   |    |            |                   |                   | DNP             |                |             |          |          |          |          |               |
| TX ST         | 1/11/14  |    | 9          | 0-3/.000          | 0-2               | 0-0/0.000       | 1-1-2          | 0-0         | 0        | 0        | 0        | 1        | 0/3.7         |
| Troy          | 1/16/14  |    | 11         | 3-5/.600          | 3-4               | 0-0/0.000       | 0-0-0          | 3-0         | 0        | 0        | 0        | 0        | 9/4.2         |
| USA           | 1/18/14  |    | 24         | 3-8/.375          | 2-7               | 2-2/1.000       | 2-2-4          | 2-0         | 0        | 0        | 0        | 0        | 10/4.7        |
| WKU           | 1/23/14  |    | 16         | 2-6/.333          | 2-6               | 0-0/0.000       | 0-2-2          | 1-0         | 0        | 0        | 0        | 1        | 6/4.8         |
| GSU           |          |    |            |                   |                   |                 |                |             |          |          |          |          |               |
| ASU           |          |    |            |                   |                   |                 |                |             |          |          |          |          |               |
| ULL           |          |    |            |                   |                   |                 |                |             |          |          |          |          |               |
| TX ST         |          |    |            |                   |                   |                 |                |             |          |          |          |          |               |
| UTA           |          |    |            |                   |                   |                 |                |             |          |          |          |          |               |
| UALR          |          |    |            |                   |                   |                 |                |             |          |          |          |          |               |
| GSU           |          |    |            |                   |                   |                 |                |             |          |          |          |          |               |
| WKU           |          |    |            |                   |                   |                 |                |             |          |          |          |          |               |
| USA           |          |    |            |                   |                   |                 |                |             |          |          |          |          |               |
| Troy          |          |    |            |                   |                   |                 |                |             |          |          |          |          |               |
| ASU           |          |    |            |                   |                   |                 |                |             |          |          |          |          |               |
| UALR          |          |    |            |                   |                   |                 |                |             |          |          |          |          |               |
| <b>Totals</b> |          |    | <b>167</b> | <b>20-55/.364</b> | <b>16-44/.364</b> | <b>2-3/.667</b> | <b>5-14-19</b> | <b>20-0</b> | <b>4</b> | <b>6</b> | <b>0</b> | <b>4</b> | <b>58/4.8</b> |



## 35 Colten Ponder

Sophomore | Forward | 6-5 | 215  
Shreveport, La. | Calvary Baptist Academy

|        | Season-High          | Career-High           |
|--------|----------------------|-----------------------|
| Pts    | N/A                  | N/A                   |
| FG     | N/A                  | N/A                   |
| 3FG    | N/A                  | N/A                   |
| FT     | N/A                  | N/A                   |
| Asst   | N/A                  | N/A                   |
| Reb    | N/A                  | 1, vs. LTU (11/24/12) |
| Blocks | N/A                  | N/A                   |
| Steals | N/A                  | N/A                   |
| Min    | 2, at OSU (12/27/13) | 2, at OSU (12/27/13)  |

| Opponent      | Date     | GS | Min      | FG-FGA/Pct.     | 3FG-FGA    | FT-FTA/PCT       | O-D-T        | PF-FO      | A        | TO       | Blk      | Stl      | Pts/Avg      |
|---------------|----------|----|----------|-----------------|------------|------------------|--------------|------------|----------|----------|----------|----------|--------------|
| Kansas        | 11/8/13  |    |          |                 |            | DNP              |              |            |          |          |          |          |              |
| Samford       | 11/18/13 |    |          |                 |            | DNP              |              |            |          |          |          |          |              |
| NSU           | 11/21/13 |    |          |                 |            | DNP              |              |            |          |          |          |          |              |
| Thomas        | 12/9/13  |    |          |                 |            | DNP              |              |            |          |          |          |          |              |
| LSU           | 12/14/13 |    |          |                 |            | DNP              |              |            |          |          |          |          |              |
| Ole Miss      | 12/18/13 |    |          |                 |            | DNP              |              |            |          |          |          |          |              |
| La. Tech      | 12/22/13 |    |          |                 |            | DNP              |              |            |          |          |          |          |              |
| OSU           | 12/27/13 |    | 2        | 0-0/.000        | 0-0        | 0-0/0.000        | 0-0-0        | 0-0        | 0        | 0        | 0        | 0        | 0/0.0        |
| ULL           | 1/4/14   |    |          |                 |            | DNP              |              |            |          |          |          |          |              |
| UTA           | 1/9/14   |    |          |                 |            | DNP              |              |            |          |          |          |          |              |
| TX ST         | 1/11/14  |    |          |                 |            | DNP              |              |            |          |          |          |          |              |
| Troy          | 1/16/14  |    |          |                 |            | DNP              |              |            |          |          |          |          |              |
| USA           | 1/18/14  |    |          |                 |            | DNP              |              |            |          |          |          |          |              |
| WKU           | 1/23/14  |    |          |                 |            | DNP              |              |            |          |          |          |          |              |
| GSU           |          |    |          |                 |            |                  |              |            |          |          |          |          |              |
| ASU           |          |    |          |                 |            |                  |              |            |          |          |          |          |              |
| ULL           |          |    |          |                 |            |                  |              |            |          |          |          |          |              |
| TX ST         |          |    |          |                 |            |                  |              |            |          |          |          |          |              |
| UTA           |          |    |          |                 |            |                  |              |            |          |          |          |          |              |
| UALR          |          |    |          |                 |            |                  |              |            |          |          |          |          |              |
| GSU           |          |    |          |                 |            |                  |              |            |          |          |          |          |              |
| WKU           |          |    |          |                 |            |                  |              |            |          |          |          |          |              |
| USA           |          |    |          |                 |            |                  |              |            |          |          |          |          |              |
| Troy          |          |    |          |                 |            |                  |              |            |          |          |          |          |              |
| ASU           |          |    |          |                 |            |                  |              |            |          |          |          |          |              |
| UALR          |          |    |          |                 |            |                  |              |            |          |          |          |          |              |
| <b>Totals</b> |          |    | <b>2</b> | <b>0-0/.000</b> | <b>0-0</b> | <b>0-0/0.000</b> | <b>0-0-0</b> | <b>0-0</b> | <b>0</b> | <b>0</b> | <b>0</b> | <b>0</b> | <b>0/0.0</b> |



# Warhawks Men's Basketball

University of Louisiana at Monroe



## Media Roster



### **0 Marvin Williams**

Junior | Center | 6-8 | 245  
Memphis, Tenn.  
NW Florida State College  
8.1 ppg, 4.2 rpg, .467 FG%



### **13 Chinedu Amajoyi**

Junior | Guard | 6-3 | 195  
Rancho Cucamonga, Calif.  
Kilgore College  
1.9 ppg, 1.5 rpg, .429 FG%



### **1 Jayon James**

Senior | Forward | 6-6 | 225  
Paterson, N.J.  
Lamar State-Port Arthur  
9.9 ppg, 6.0 rpg, .520 FG%



### **15 Kyle Koszuta**

Sophomore | Guard | 6-2 | 190  
Niceville, Fla.  
Niceville HS  
2.4 ppg, .297 FG%, .259 3FG%



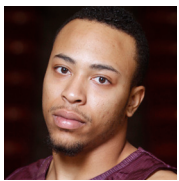
### **2 DeMondre Harvey**

Sophomore | Forward | 6-7 | 210  
Minden, La.  
Pearl River CC  
3.4 ppg, 4.0 rpg, .513 FG%



### **20 Evan Sims**

Junior | Forward | 6-8 | 235  
Houston, Texas  
Lamar State-Port Arthur  
1.0 ppg, 1.3 rpg, .250 FG%



### **3 Marcellis Hansberry**

Senior | Guard | 6-0 | 185  
Jackson, Miss.  
Provine HS  
ACL Injury



### **22 Lance Richard**

Freshman | Guard | 5-10 | 170  
Monroe, La.  
Sterlington HS  
Redshirting



### **4 R.J. McCray**

Senior | Guard | 6-2 | 190  
Arlington, Texas  
Grace Prep Academy  
4.2 ppg, .326 FG%, .273 3FG%



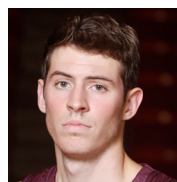
### **23 Millann Brown**

Senior | Forward | 6-7 | 230  
Gunnison, Miss.  
East Mississippi CC  
1.8 ppg, 2.7 rpg, .444 FG%



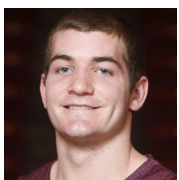
### **10 Amos Olatayo**

Senior | Guard | 6-4 | 200  
Houston, Texas  
Navarro College  
13.2 ppg, 5.3 rpg, .453 FG%



### **33 Daniel Grieves**

Sophomore | Guard | 6-6 | 210  
Bay St. Louis, Miss.  
Pearl River CC  
4.8 ppg, .364 FG%, .364 3FG%



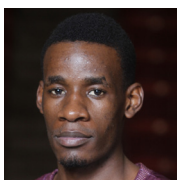
### **11 Nick Coppola**

Freshman | Guard | 5-11 | 195  
Richmond, Va.  
Benedictine Prep  
4.6 ppg, 2.9 rpg, 3.7 apg



### **34 Leon Carswell JJ**

Junior | Forward | 6-3 | 225  
Bossier City, La.  
Hannibal-LaGrange University  
2.0 ppg, 2.0 rpg, (one appearance)



### **12 Tylor Ongwae**

Junior | Forward | 6-7 | 205  
Eldoret, Kenya  
Ranger College  
15.4 ppg, 4.9 rpg, .433 FG%



### **35 Colten Ponder**

Sophomore | Forward | 6-5 | 215  
Shreveport, La.  
Calvary Baptist Academy  
2 mins (one appearance)